

# **BALDOR**® • ***RELIANCE***

## **Product Information Packet**

# **VEJMM3157T**

**2HP,1750RPM,3PH,60HZ,145JM,3525M,OPEN,F1**

| Part Detail |       |                |       |             |          |               |            |
|-------------|-------|----------------|-------|-------------|----------|---------------|------------|
| Revision:   | H     | Status:        | PRD/A | Change #:   |          | Proprietary:  | No         |
| Type:       | AC    | Prod. Type:    | 3525M | Elec. Spec: | 35WGM496 | CD Diagram:   | CD0005     |
| Enclosure:  | ODTF  | Mfg Plant:     |       | Mech. Spec: | 35EE422  | Layout:       | 35LYEE422  |
| Frame:      | 145JM | Mounting:      | F1    | Poles:      | 04       | Created Date: | 11-24-2010 |
| Base:       | N     | Rotation:      | R     | Insulation: | F        | Eff. Date:    | 07-22-2015 |
| Leads:      | 9#18  |                |       |             |          | Replaced By:  |            |
| Literature: |       | Elec. Diagram: |       |             |          |               |            |

|                          |               |                |      |     |   |    |   |
|--------------------------|---------------|----------------|------|-----|---|----|---|
| <b>Nameplate NP1259L</b> |               |                |      |     |   |    |   |
| CAT.NO.                  | VEJMM3157T    |                |      |     |   |    |   |
| SPEC.                    | 35EE422M496G1 |                |      |     |   |    |   |
| HP                       | 2             |                |      |     |   |    |   |
| VOLTS                    | 230/460       |                |      |     |   |    |   |
| AMP                      | 5.8/2.9       |                |      |     |   |    |   |
| RPM                      | 1750          |                |      |     |   |    |   |
| FRAME                    | 145JM         | HZ             | 60   | PH  | 3 |    |   |
| SER.F.                   | 1.15          | CODE           | K    | DES | B | CL | F |
| NEMA-NOM-EFF             | 86.5          | PF             | 76   |     |   |    |   |
| RATING                   | 40C AMB-CONT  |                |      |     |   |    |   |
| CC                       | 010A          | USABLE AT 208V | 5.8  |     |   |    |   |
| DE                       | 6206          | ODE            | 6203 |     |   |    |   |
| ENCL                     | ODTF          | SN             |      |     |   |    |   |
|                          |               |                |      |     |   |    |   |

| Parts List     |  |          |
|----------------|--|----------|
| Part Number    | Description                              | Quantity |
| SA212569       | SA 35EE422M496G1                         | 1.000 EA |
| RA199798       | RA 35EE422M496G1                         | 1.000 EA |
| S/P107-000-001 | SUPER E PROC'S-FS, WS & CK PLTS          | 1.000 EA |
| NS2512A01      | INSULATOR, CONDUIT BOX X                 | 1.000 EA |
| 35CB3009       | 35 CB CASTING W/1.09 DIA. LEAD HOLE @ 6: | 1.000 EA |
| 51XB1016A07    | 10-16 X 7/16 HXWSSLD SERTYB              | 2.000 EA |
| 11XW1032G06    | 10-32 X .38, TAPTITE II, HEX WSHR SLTD U | 1.000 EA |
| HW3001B02      | 1RASS CUP WASHER W/GROUND SYMBOL TAB,    | 1.000 EA |
| 35EP3201A02    | FR ENDPLATE, MACH                        | 1.000 EA |
| HA1100A03      | SCREEN, RODENT                           | 1.000 EA |
| 51XT1032A04    | 10-32X1/4 HX WA SL SR TYT (F/S)          | 4.000 EA |
| HW1000A10      | #10 FLAT WASHER (SAE)                    | 4.000 EA |
| HW4500A01      | 1641B(ALEMITE)400 UNIV, GREASE FITT      | 1.000 EA |
| HW5100A03SP    | WAVY WASHER (W1543-017)                  | 1.000 EA |
| 35EP3401A05    | B/OPEN FACE MTD. ENDPLATE 35 FRAME 206 B | 1.000 EA |
| 35AD2001       | AIR BAFFLE                               | 1.000 EA |
| 15XF0632A06    | 6-32 X 3/8 PHILL PAN HD TYPE F           | 4.000 EA |
| HA1102A08      | RODENT SCREEN 35 OPEN FACE MTD           | 1.000 EA |
| 51XT1032A04    | 10-32X1/4 HX WA SL SR TYT (F/S)          | 4.000 EA |
| HW1000A10      | #10 FLAT WASHER (SAE)                    | 4.000 EA |
| HW4500A01      | 1641B(ALEMITE)400 UNIV, GREASE FITT      | 1.000 EA |
| 51XN1032A16    | 10-32 X 1.000 HX WS SL SR                | 2.000 EA |
| 35FH4006A04    | DRIP COVER SPECIAL, W/ AUTOPHERETIC PRIM | 1.000 EA |
| 51XW1032A06    | 10-32 X .38, TAPTITE II, HEX WSHR SLTD S | 3.000 EA |

| <b>Parts List (continued)</b> |  |                 |
|-------------------------------|--|-----------------|
| <b>Part Number</b>            | <b>Description</b>                       | <b>Quantity</b> |
| 35CB4521                      | 35 LIPPED CB LID (GALV & PHOSPH)         | 1.000 EA        |
| 51XW0832A07                   | 8-32 X .44, TAPTITE II, HEX WSHR SLTD SE | 4.000 EA        |
| HA1005A02SP                   | SLINGER, OD 2.00, ID 1.14, 206 BRG,      | 1.000 EA        |
| HW2501D13SP                   | KEY, 3/16 SQ X 1.375                     | 1.000 EA        |
| HA7000A01                     | KEY RETAINER 7/8" DIA SHAFT              | 1.000 EA        |
| 85XU0407S04                   | 4X1/4 U DRIVE PIN STAINLESS              | 2.000 EA        |
| MJ1000A75                     | GREASE, POLYREX EM EXXON (USe 4824-15A)  | 0.050 LB        |
| 35FN3002A05SP                 | EXFN, PLASTIC, 6.376 OD, .638 ID         | 1.000 EA        |
| 51XB1214A16                   | 12-14X1.00 HXWSSLD SERTYB                | 1.000 EA        |
| MG1000Y03                     | MUNSELL 2.53Y 6.70/ 4.60, GLOSS 20,      | 0.017 GA        |
| HA3100A15                     | THRUBOLT 10-32 X 8.375                   | 4.000 EA        |
| LC0005E01                     | CONN.DIA./WARNING LABEL (LC0005/LB1119N) | 1.000 EA        |
| NP1259L                       | ALUM SUPER-E UL CSA-EEV CC NEMA PREMIUM  | 1.000 EA        |
| 36PA1001                      | PKG GRP, PRINT PK1017A06                 | 1.000 EA        |
| PK3082                        | STYROFOAM CRADLE                         | 1.000 EA        |
| MN416A01                      | TAG-INSTAL-MAINT no wire (1200/bx) 11/14 | 1.000 EA        |

**AC Induction Motor Performance Data**

Record # 33882 - Typical performance - not guaranteed values

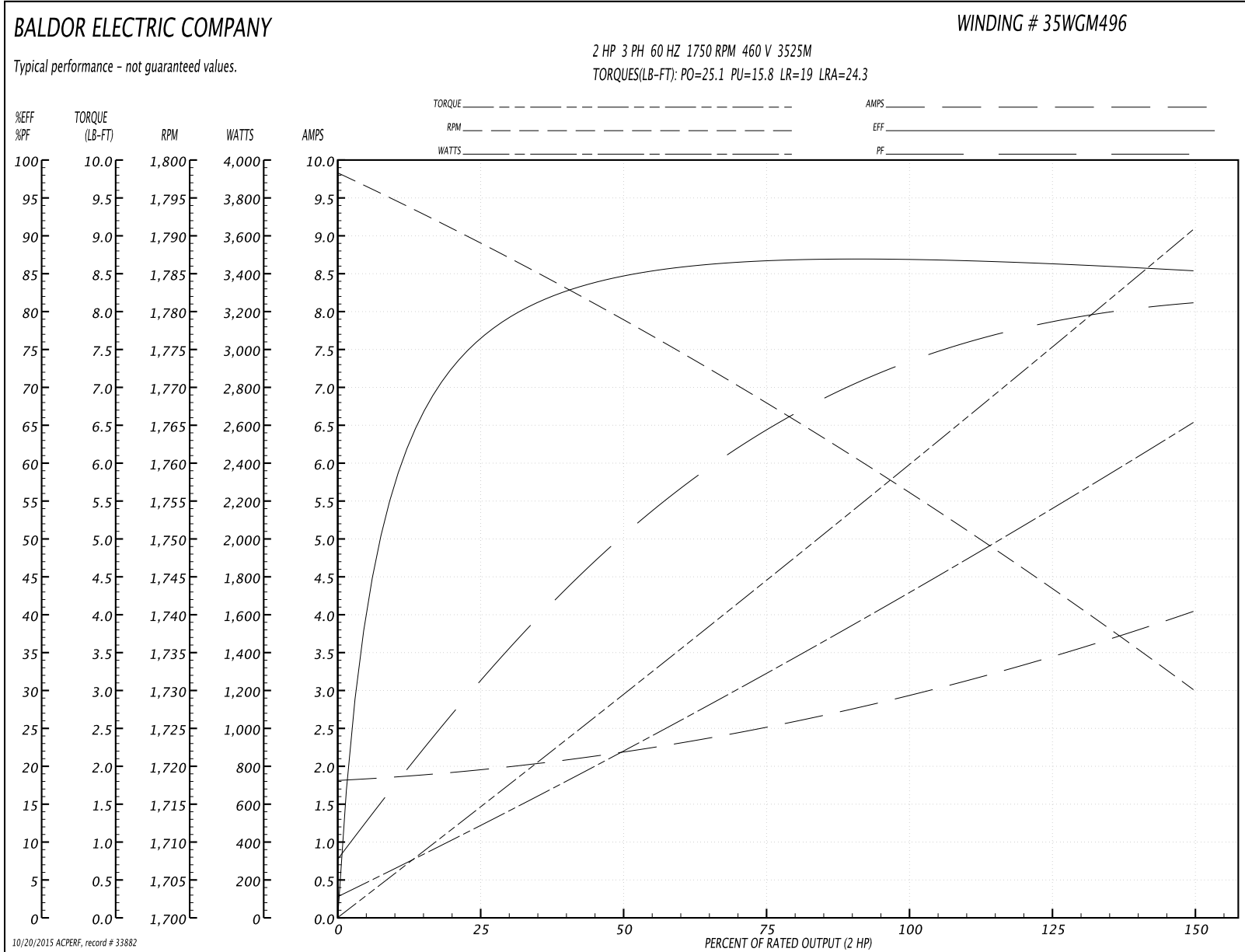
|                               |                    |                        |
|-------------------------------|--------------------|------------------------|
| <b>Winding:</b> 35WGM496-R001 | <b>Type:</b> 3525M | <b>Enclosure:</b> OPSB |
|-------------------------------|--------------------|------------------------|

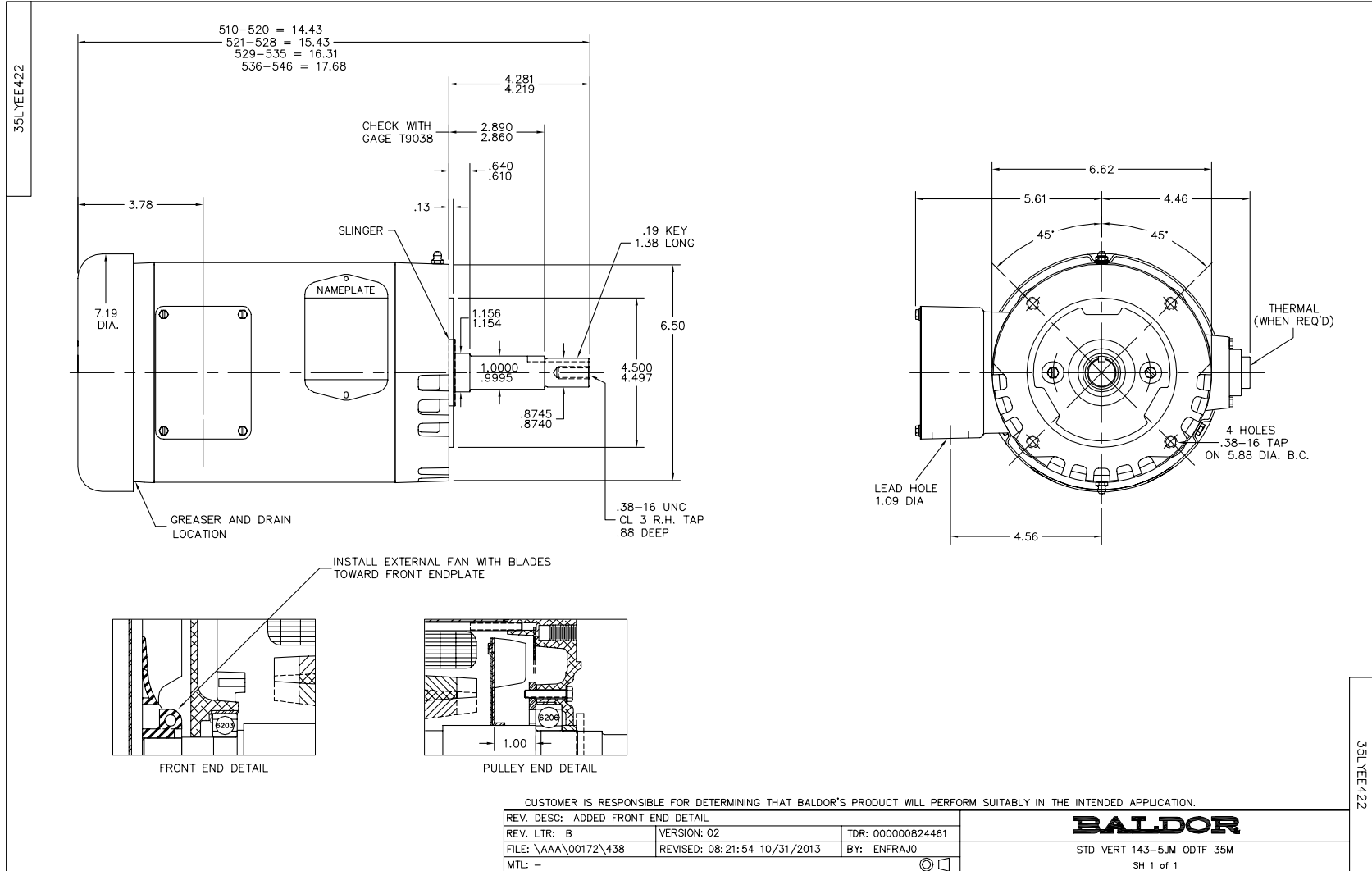
| Nameplate Data        |              |              |    | 460 V, 60 Hz:<br>High Voltage Connection |                          |
|-----------------------|--------------|--------------|----|--|--------------------------|
| Rated Output (HP)     | 2            |              |    | Full Load Torque                         | 5.96 LB-FT               |
| Volts                 | 230/460      |              |    | Start Configuration                      | direct on line           |
| Full Load Amps        | 5.8/2.9      |              |    | Breakdown Torque                         | 25.1 LB-FT               |
| R.P.M.                | 1750         |              |    | Pull-up Torque                           | 15.8 LB-FT               |
| Hz                    | 60           | Phase        | 3  | Locked-rotor Torque                      | 19 LB-FT                 |
| NEMA Design Code      | B            | KVA Code     | K  | Starting Current                         | 24.3 A                   |
| Service Factor (S.F.) | 1.15         |              |    | No-load Current                          | 1.83 A                   |
| NEMA Nom. Eff.        | 86.5         | Power Factor | 76 | Line-line Res. @ 25°C                    | 7.5814 Ω                 |
| Rating - Duty         | 40C AMB-CONT |              |    | Temp. Rise @ Rated Load                  | 40°C                     |
| S.F. Amps             |              |              |    | Temp. Rise @ S.F. Load                   | 47°C                     |
|                       |              |              |    | Rotor inertia                            | 0.148 LB-FT <sup>2</sup> |

Load Characteristics 460 V, 60 Hz, 2 HP

| % of Rated Load | 25     | 50     | 75     | 100    | 125    | 150    | S.F. |
|-----------------|--------|--------|--------|--------|--------|--------|------|
| Power Factor    | 32     | 51     | 64     | 73     | 78     | 82     | 76   |
| Efficiency      | 76     | 84.4   | 86.6   | 86.9   | 86.4   | 85.2   | 86.6 |
| Speed           | 1788.5 | 1778.5 | 1767.8 | 1756.9 | 1744.4 | 1729.4 | 1749 |
| Line amperes    | 1.94   | 2.16   | 2.52   | 2.95   | 3.45   | 4.03   | 3.25 |

Performance Graph at 460V, 60Hz, 2.0HP Typical performance - Not guaranteed values







CD0005

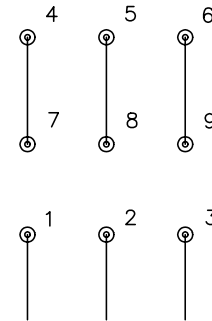


LOW VOLTAGE  
(2Y)



LINE

HIGH VOLTAGE  
(1Y)



LINE

NOTES:

1. INTERCHANGE ANY TWO LINE LEADS TO REVERSE ROTATION.
2. OPTIONAL THERMOSTATS ARE PROVIDED WHEN SPECIFIED.
3. ACTUAL NUMBER OF INTERNAL PARALLEL CIRCUITS MAY BE A MULTIPLE OF THOSE SHOWN ABOVE.
4. LEAD COLORS ARE OPTIONAL. LEADS MUST ALWAYS BE NUMBERED AS SHOWN.

|   |         |                         |              |
|---|---------|-------------------------|--------------|
| REV. DESC: REVISE TO SHOW OPTIONAL COLORS |         |                         |              |
| REV. LTR: E                               | BY: JLP | REVISED: 01/19/99 10:15 | TDR: 0171435 |
| 90000                                     |         | FILE: AAA00005140       | MDL: -       |
|   |         | MTL: -                  |              |

**BALDOR ELECTRIC Co.**

3PH, DV, 9 LEADS

CD0005