

BALDOR® • **RELIANCE**

Product Information Packet

L1201

.17HP,1140RPM,1PH,60HZ,48,3418L,OPEN,F1

Part Detail							
Revision:	U	Status:	PRD/A	Change #:		Proprietary:	No
Type:	AC	Prod. Type:	3418L	Elec. Spec:	34WG5612	CD Diagram:	CD0001
Enclosure:	OPEN	Mfg Plant:		Mech. Spec:	34F001	Layout:	34LYF001
Frame:	48	Mounting:	F1	Poles:	06	Created Date:	
Base:	RG	Rotation:	R	Insulation:	B	Eff. Date:	07-21-2015
Leads:	6#18					Replaced By:	
Literature:		Elec. Diagram:					

Nameplate NP1256L							
CAT.NO.	L1201						
SPEC.	34F01-5612						
HP	.17						
VOLTS	115/230						
AMP	4.6/2.3						
RPM	1140						
FRAME	48	HZ	60	PH	1		
SER.F.	1.35	CODE	P	DES	N	CLASS	B
NEMA-NOM-EFF	47	PF	52				
RATING	40C AMB-CONT						
CC		USABLE AT 208V	2.6				
DE	6203	ODE	6203				
ENCL	OPEN	SN					
	SFA 5/2.5						

Parts List		
Part Number	Description	Quantity
SA007604	SA 34F01-5612	1.000 EA
RA003991	RA 34F01-5612	1.000 EA
NS2512A01	INSULATOR, CONDUIT BOX X	1.000 EA
34CB3002A	CB CAST W/.88 DIA HOLE	1.000 EA
51XB1016A07	10-16 X 7/16 HXWSSLD SERTYB	2.000 EA
11XW1032G06	10-32 X .38, TAPTITE II, HEX WSHR SLTD U	1.000 EA
51XW0832A07	8-32 X .44, TAPTITE II, HEX WSHR SLTD SE	2.000 EA
SP1006A01	TERM. BOARD, MODE 35 SW X H-23655	1.000 EA
34EP3210A01SP	FR ENDPLATE, MACH	1.000 EA
NS2500A01	INSULATOR, AUTO THER PROT	1.000 EA
WD1000A03	41531 AMP FLG.TERM,4M/REEL(2.5MIL)	1.000 EA
34CB4800SP	CAPACITOR COVER, STAMPED	1.000 EA
51XB1016A05	10-16X5/16HX WA SL SR TYB (F/S)	2.000 EA
HW5100A03SP	WAVY WASHER (W1543-017)	1.000 EA
34EP3212A02	PU ENDPLATE, MODEL 34 OPEN	1.000 EA
XY1032A02	10-32 HEX NUT DIRECTIONAL SERRATION	4.000 EA
34CB4517	CB LID 4 MTG HOLES .22 DIA STAMPED, FOR	1.000 EA
51XW0832A07	8-32 X .44, TAPTITE II, HEX WSHR SLTD SE	4.000 EA
MG1000G27	MED CHARCOAL METALLIC GREY	0.014 GA
10XF0440S02	04-40 X 1/8 TYPE F HEX HD STAINLESS STIC	2.000 EA
SP5051B16	MDL 34 TORQ STAT SW,TYPE L , STD F1 & F2	1.000 EA
EC1130A02SP	ELEC CAP, 130-156 MFD, 125V, 1.48D X 3.3	1.000 EA
HA3100A47	THRUBOLT 10-32 X 7.625	4.000 EA
LC0001A01	CONN LABEL / WARNING LABEL (LC0001 / LB1	1.000 EA

Parts List (continued)		
Part Number	Description	Quantity
NP1256L	ALUM UL CSA CC	1.000 EA
34PA1002	PKG GRP, PRINT PK1001A01	1.000 EA

AC Induction Motor Performance Data
Record # 6800 - Typical performance - not guaranteed values

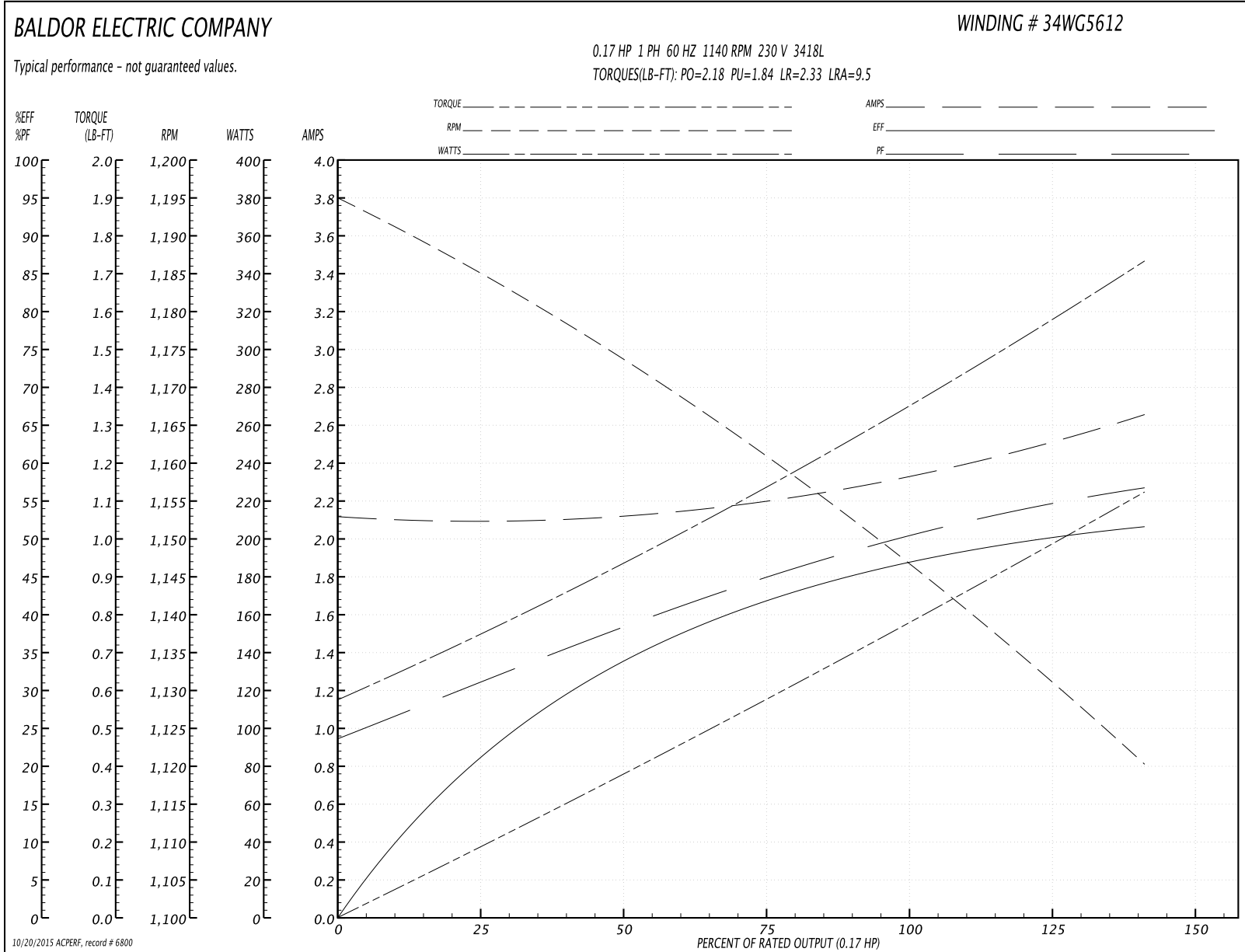
Winding: 34WG5612-R001	Type: 3418L	Enclosure: OPEN
-------------------------------	--------------------	------------------------

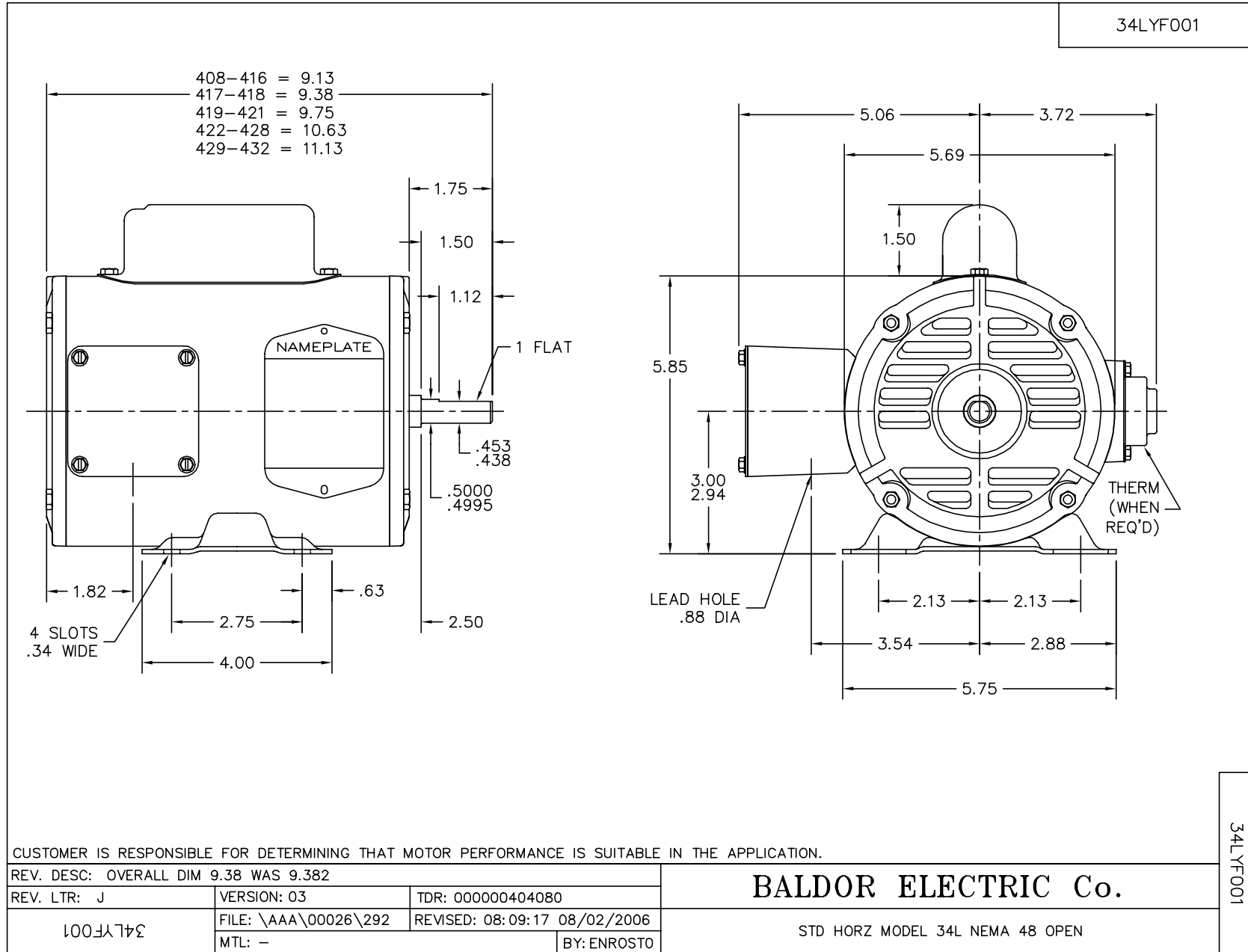
Nameplate Data				230 V, 60 Hz: High Voltage Connection	
Rated Output (HP)	.17			Full Load Torque	0.75 LB-FT
Volts	115/230			Start Configuration	direct on line
Full Load Amps	4.6/2.3			Breakdown Torque	2.18 LB-FT
R.P.M.	1140			Pull-up Torque	1.84 LB-FT
Hz	60	Phase	1	Locked-rotor Torque	2.33 LB-FT
NEMA Design Code	N	KVA Code	P	Starting Current	9.5 A
Service Factor (S.F.)	1.35			No-load Current	2.1 A
NEMA Nom. Eff.	47	Power Factor	52	Line-line Res. @ 25°C	11.6 Ω A Ph 10.4 Ω B Ph
Rating - Duty	40C AMB-CONT			Temp. Rise @ Rated Load	43°C
S.F. Amps	5/2.5			Temp. Rise @ S.F. Load	51°C

Load Characteristics 230 V, 60 Hz, 0.17 HP

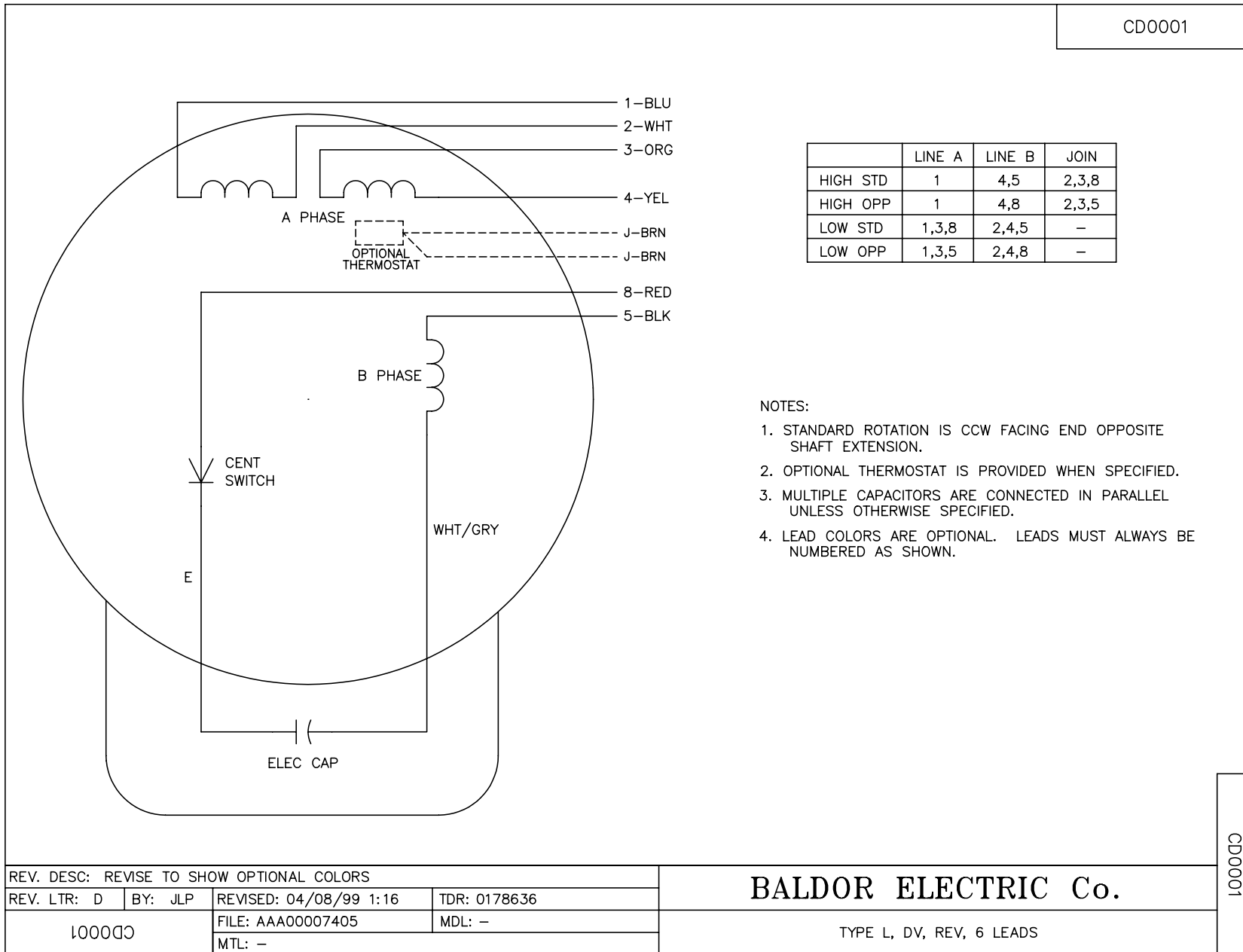
% of Rated Load	25	50	75	100	125	150	S.F.
Power Factor	31	39	45	52	58	64	62
Efficiency	19	34	42	47	50	51	50.5
Speed	1185	1175	1160	1150	1135	1120	1125
Line amperes	2.1	2.15	2.2	2.3	2.4	2.7	2.5

Performance Graph at 230V, 60Hz, 0.17HP Typical performance - Not guaranteed values





CD0001



CD0001

REV. DESC: REVISE TO SHOW OPTIONAL COLORS			
REV. LTR: D	BY: JLP	REVISED: 04/08/99 1:16	TDR: 0178636
100000		FILE: AAA00007405	MDL: -
		MTL: -	

BALDOR ELECTRIC Co.

TYPE L, DV, REV, 6 LEADS