

BALDOR® • RELIANCE

Product Information Packet

GSL3509M

1.5HP, 1735RPM, 1PH, 60HZ, 56Z, 3523LC, TEFC, F

Part Detail							
Revision:	K	Status:	PRD/A	Change #:		Proprietary:	No
Type:	AC	Prod. Type:	3523LC	Elec. Spec:	35WGP243	CD Diagram:	CD0370
Enclosure:	TEFC	Mfg Plant:		Mech. Spec:	35G630	Layout:	35LYG630
Frame:	56Z	Mounting:	F1	Poles:	04	Created Date:	03-29-2006
Base:	RG	Rotation:	R	Insulation:	F	Eff. Date:	07-22-2015
Leads:	2#16 A PH,3#18 B&J,2#18 P					Replaced By:	
Literature:		Elec. Diagram:					

Nameplate NP1280L							
CAT.NO.	GSL3509M						
SPEC.	35G630P243G1						
HP	1.5						
VOLTS	208-230						
AMP	6.9-6.4						
RPM	1750						
FRAME	56Z	HZ	60	PH	1		
SER.F.	1.15	CODE	J	DES	L	CL	F
NEMA-NOM-EFF	80	PF	94				
RATING	40C AMB-CONT						
CC		USABLE AT 208V					
DE	6205	ODE	6203				
ENCL	TEFC	SN					

Parts List		
Part Number	Description	Quantity
SA150868	SA 35G630P243G1	1.000 EA
RA139713	RA 35G630P243G1	1.000 EA
OC3025F11	CYL OIL CAP 25MFD/370V	1.000 EA
TPCRT52CA	THERMAL 1PH 1.00 MAN 105C	1.000 EA
EC1161C06SP	ELEC CAP, 161-193 MFD, 250V, 2.06D X 4.	1.000 EA
NS2512A01	INSULATOR, CONDUIT BOX X	1.000 EA
35CB3000A85	SPL CONDUIT BOX 35 W/1" MTO (FOR GASKET	1.000 EA
36GS1000SP	GASKET-CONDUIT BOX, .06 THICK #SV-330 LE	1.000 EA
51XB1016A07	10-16 X 7/16 HXWSSLD SERTYB	2.000 EA
11XW1032G06	10-32 X .38, TAPTITE II, HEX WSHR SLTD U	1.000 EA
HW3001B01	BRASS CUP WASHER, FOR #8 SCREW	1.000 EA
HA6015A11	EARED 1" THERMAL RETAINER (PLATED)	1.000 EA
RM1014A01SP	BUTYL RUB.THRM COV. (MENA)	1.000 EA
51XB1214A10	12-14 X 5/8HX WS SL SR TYBX	2.000 EA
35EP3100M86	FREP TENV 35L/M 203 BRG W/FACE DRAINS	1.000 EA
51XW0832A07	8-32 X .44, TAPTITE II, HEX WSHR SLTD SE	2.000 EA
35CB3801SP	CAPACITOR COVER, CAST	1.000 EA
HA7010	CAPACITOR RETENTION CLAMP	1.000 EA
34GS3002	GASKET, CAPACITOR BOX	1.000 EA
NS2501A02	INSULATOR, CAPACITOR BOX	1.000 EA
51XB1016A08	10-16X 1/2HXWSSLD SERTYB	2.000 EA
HW5100A03SP	WAVY WASHER (W1543-017)	1.000 EA
35EP3101A04	STL PU EP-ENCL-205 BRG- FAN ON PULLEY EN	1.000 EA
XY1032A02	10-32 HEX NUT DIRECTIONAL SERRATION	4.000 EA

Parts List (continued)		
Part Number	Description	Quantity
35FN2000A04	EXFN, ALUM, 5.75 OD, .938 ID	1.000 EA
80XN2520A06	1/4-20 X 3/8 SET SCREW	1.000 EA
35FH4005A23	IEC FH NO GR SR W/SPL CUTOUT, W/ AUTOPHER	1.000 EA
51XW1032A06	10-32 X .38, TAPTITE II, HEX WSHR SLTD S	3.000 EA
WD4100A01	DP-875 HEYCO PLUG OR 62MP0875 MICRO PLAS	3.000 EA
35CB4514GX	CONDUIT BOX LID KIT	1.000 EA
51XW0832A07	8-32 X .44, TAPTITE II, HEX WSHR SLTD SE	4.000 EA
HW2501D08	KEY, 3/16 SQ X .875 AUTO	1.000 EA
HA7000A01	KEY RETAINER 7/8" DIA SHAFT	1.000 EA
WD1000A15	3-520132-2 AMP FLAG (4M/RL NON-CANC/NON-	4.000 EA
MJ1000A75	GREASE, POLYREX EM EXXON (USe 4824-15A)	0.050 LB
MG1025C02	RAL6081, LIGHT SUPER TAN, GLOSS 85,	0.017 GA
MG1025Z20	ACTIVATOR WILKOFAS 060.32	0.010 GA
LB1087	LABEL,MANUAL RESET (ROLL LABEL)	1.000 EA
85XU0407S04	4X1/4 U DRIVE PIN STAINLESS	2.000 EA
HA3100A18	THRUBOLT 10-32 X 9.250	4.000 EA
NS2500A02	INSULATOR, MAN THER PROT	1.000 EA
34GS5003	FOAM SLEEVE, ID = 2 1/16" X 3 3/8"	2.000 EA
SP5181A01	MODEL 35 LC TORQ STAT SWITCH LEAD ASSY	1.000 EA
LB1119N	WARNING LABEL	1.000 EA
LC0370	1PH, SV, REV, THERMAL 7LD, 1/2 LINE ACCE	1.000 EA
NP1280L	ALUM FARM DUTY UL CSA CC THERMAL	1.000 EA
35PA1066	PKG GRP, PRINT PK1008A06	1.000 EA
MN416A01	TAG-INSTAL-MAINT no wire (1200/bx) 11/14	1.000 EA

AC Induction Motor Performance Data

Record # 23711 - Typical performance - not guaranteed values

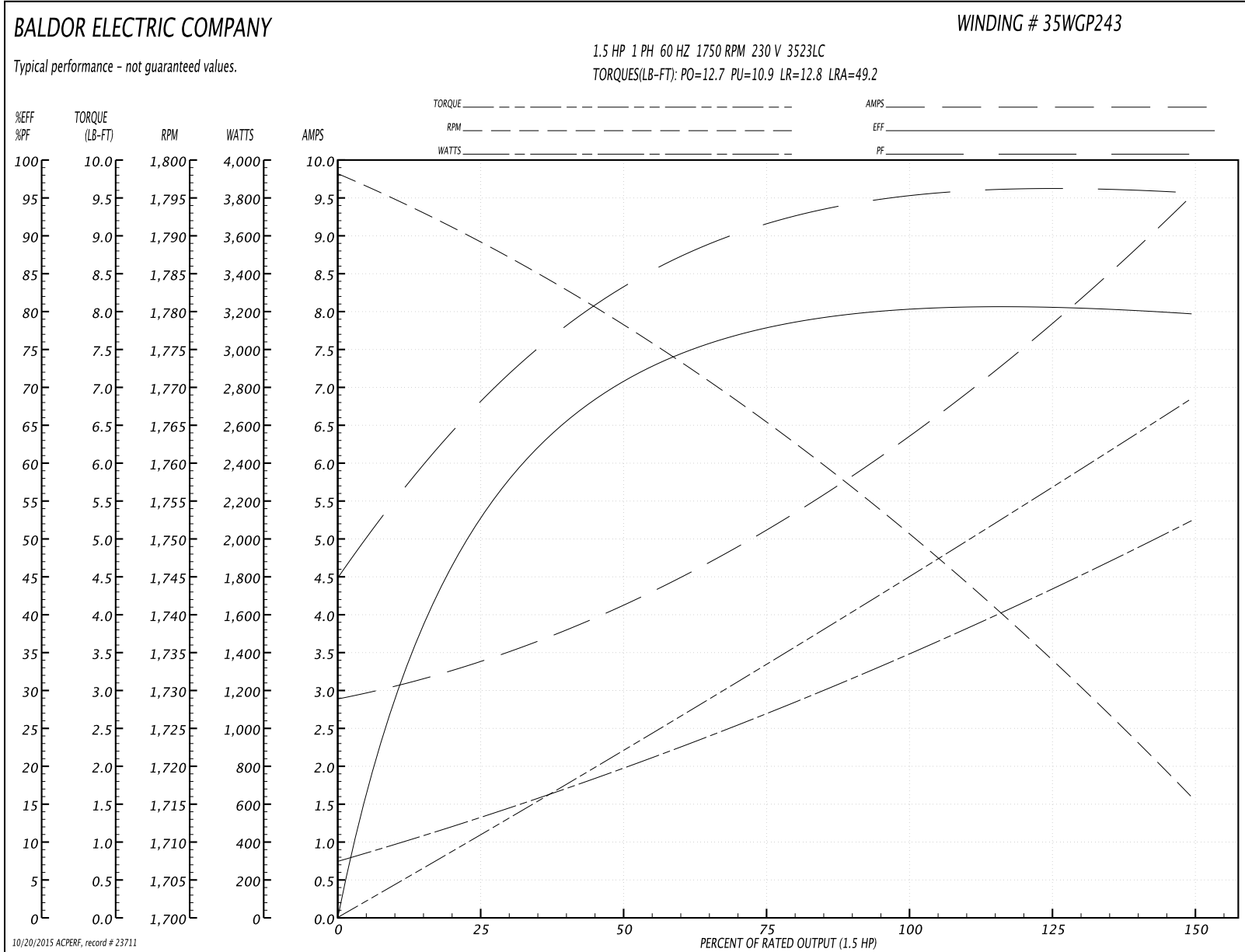
Winding: 35WGP243-R001	Type: 3523LC	Enclosure: TEFC
-------------------------------	---------------------	------------------------

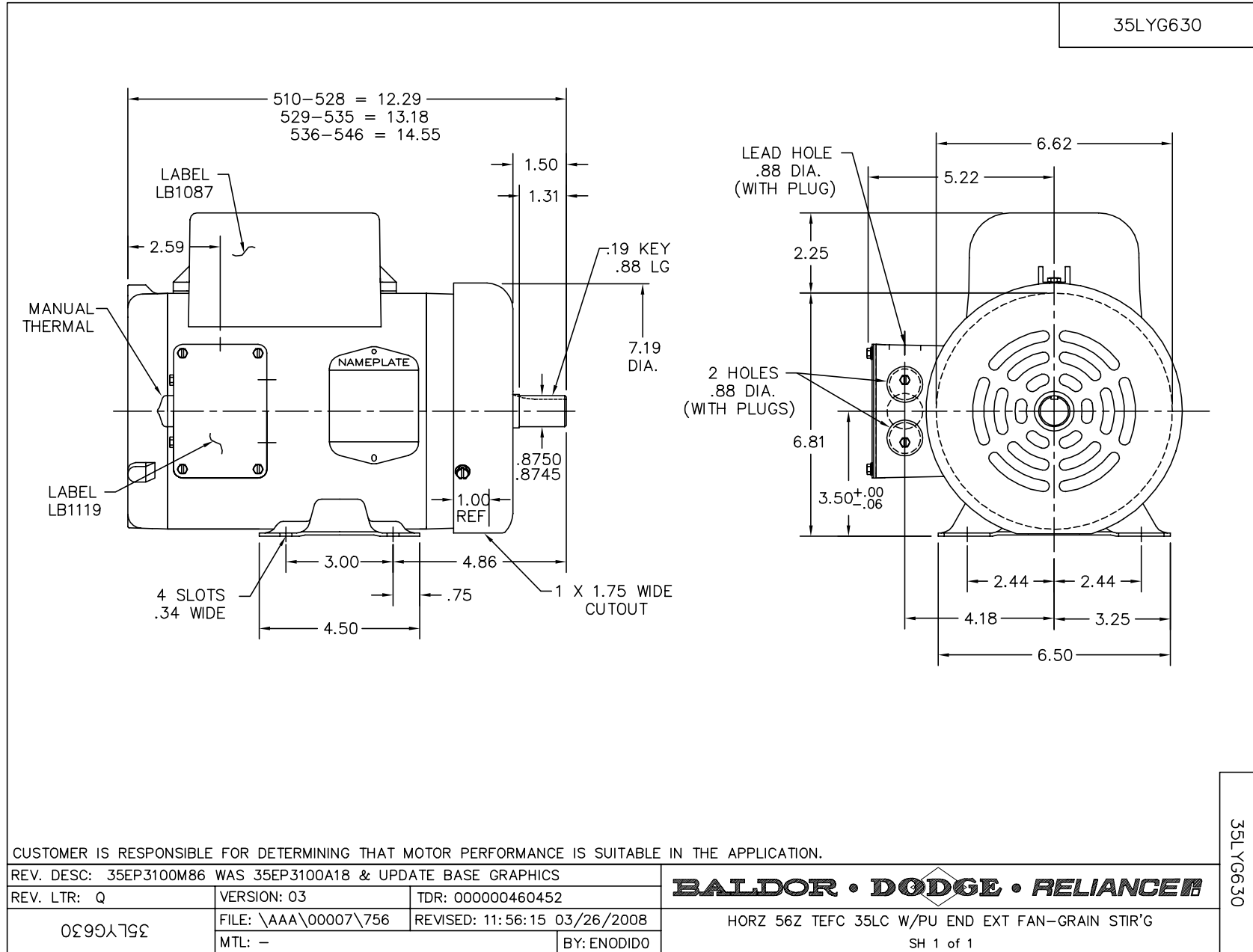
Nameplate Data				230 V, 60 Hz: Single Voltage Motor	
Rated Output (HP)	1.5			Full Load Torque	4.52 LB-FT
Volts	230			Start Configuration	direct on line
Full Load Amps	6.4			Breakdown Torque	12.7 LB-FT
R.P.M.	1750			Pull-up Torque	10.9 LB-FT
Hz	60	Phase	1	Locked-rotor Torque	12.8 LB-FT
NEMA Design Code	L	KVA Code	J	Starting Current	49.2 A
Service Factor (S.F.)	1.15			No-load Current	2.93 A
NEMA Nom. Eff.	80	Power Factor	94	Line-line Res. @ 25°C	2.06 Ω A Ph 3.74 Ω B Ph
Rating - Duty	40C AMB-CONT			Temp. Rise @ Rated Load	73°C
S.F. Amps				Temp. Rise @ S.F. Load	87°C

Load Characteristics 230 V, 60 Hz, 1.5 HP

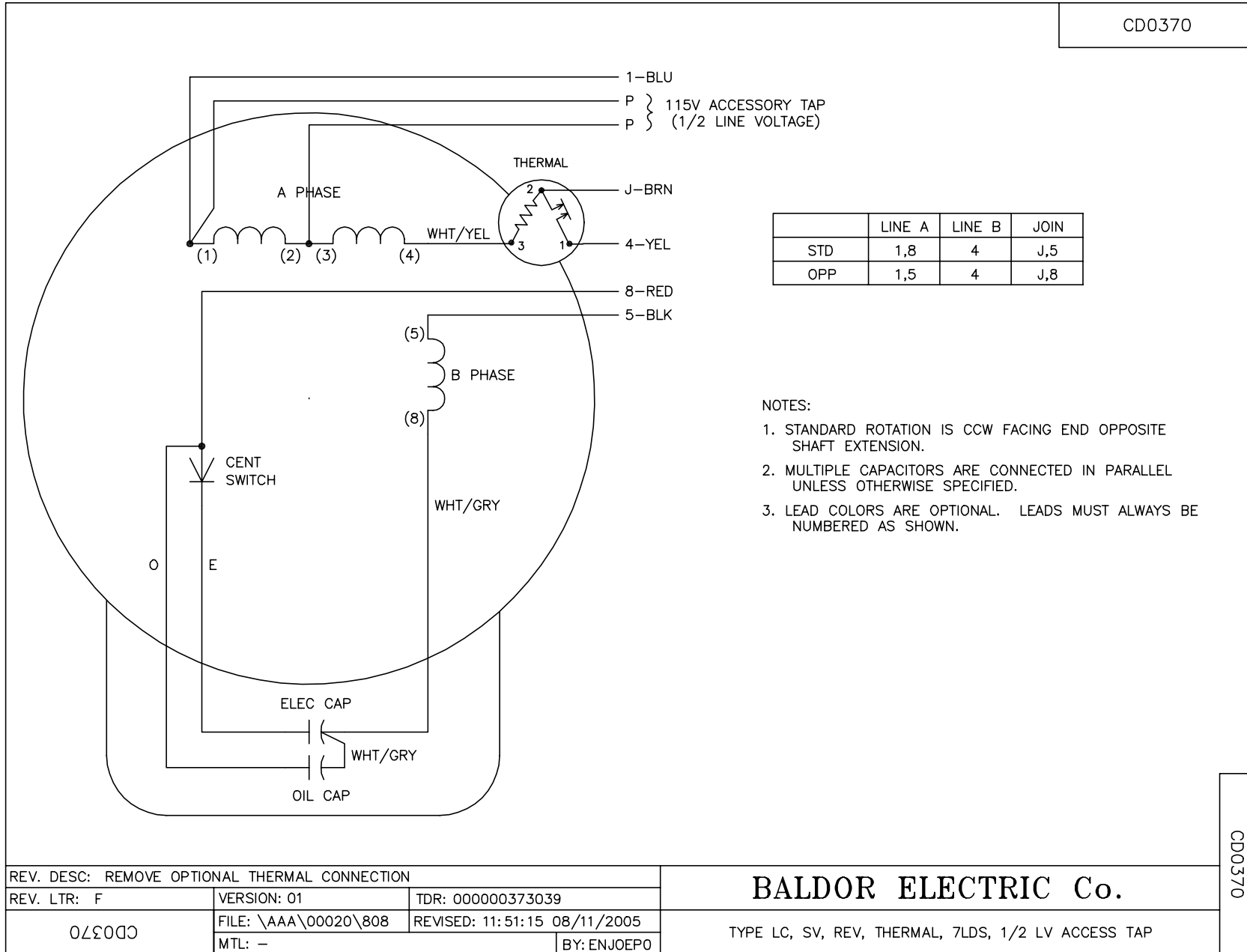
% of Rated Load	25	50	75	100	125	150	S.F.
Power Factor	69	85	91	94	96	96	95
Efficiency	50.9	70.3	77.6	80.7	81	79.4	80.9
Speed	1789	1777	1766	1751	1735	1715	1741
Line amperes	3.32	4.06	5.13	6.44	7.84	9.51	7.28

Performance Graph at 230V, 60Hz, 1.5HP Typical performance - Not guaranteed values





CD0370



CD0370

REV. DESC: REMOVE OPTIONAL THERMAL CONNECTION		
REV. LTR: F	VERSION: 01	TDR: 000000373039
0ZQ0D0	FILE: \AAA\00020\808	REVISED: 11:51:15 08/11/2005
	MTL: -	BY: ENJOEPO

BALDOR ELECTRIC Co.

TYPE LC, SV, REV, THERMAL, 7LDS, 1/2 LV ACCESS TAP