

# **BALDOR**® • **RELIANCE**

## **Product Information Packet**

# **FDL3516TM**

**2HP,1740RPM,1PH,60HZ,56HZ,3535LC,TEFC,F1**

Part Detail							
Revision:	D	Status:	PRD/A	Change #:		Proprietary:	No
Type:	AC	Prod. Type:	3535LC	Elec. Spec:	35WGN499	CD Diagram:	CD0002A02
Enclosure:	TEFC	Mfg Plant:		Mech. Spec:	35E2347	Layout:	35LYE2347
Frame:	56HZ	Mounting:	F1	Poles:	04	Created Date:	12-13-2013
Base:	RG	Rotation:	R	Insulation:	F	Eff. Date:	04-09-2015
Leads:	2#16 A PH,3#18 B%J					Replaced By:	
Literature:		Elec. Diagram:					

<b>Nameplate NP1280L</b>							
CAT.NO.	FDL3516TM						
SPEC.	35E2347N499G1						
HP	2						
VOLTS	230						
AMP	7.9						
RPM	1740						
FRAME	56HZ	HZ	60	PH	1		
SER.F.	1.15	CODE	H	DES	L	CL	F
NEMA-NOM-EFF	82.5	PF	99				
RATING	40C AMB-CONT						
CC		USABLE AT 208V	8.9				
DE	6205	ODE	6203				
ENCL	TEFC	SN					

Parts List		
Part Number	Description	Quantity
SA274228	SA 35E2347N499G1	1.000 EA
RA260815	RA 35E2347N499G1	1.000 EA
OC3030F11SP	CYL OIL CAP 30MFD/370V	1.000 EA
TPCRD4778	THERMAL 1PH 1.00 MAN 105C,WELD TERMINALS	1.000 EA
EC1216C06SP	ELEC CAP, 216-259 MFD, 250V, 2.06D X 4.	1.000 EA
NS2512A01	INSULATOR, CONDUIT BOX X	1.000 EA
35CB3007A58	35 CB .88 DIA @ 6, 1.00 MTO W/BOOT @ 3 (	1.000 EA
36GS1000SP	GASKET-CONDUIT BOX, .06 THICK #SV-330 LE	1.000 EA
51XB1016A07	10-16 X 7/16 HXWSSLD SERTYB	2.000 EA
HA6015A11	EARED 1" THERMAL RETAINER (PLATED)	1.000 EA
RM1014A01SP	BUTYL RUB.THRM COV. (MENA)	1.000 EA
51XB1214A10	12-14 X 5/8HX WS SL SR TYBX	2.000 EA
11XW1032G06	10-32 X .38, TAPTITE II, HEX WSHR SLTD U	1.000 EA
51XW0832A07	8-32 X .44, TAPTITE II, HEX WSHR SLTD SE	2.000 EA
HA1005A05SP	SLINGER, OD 1.50, ID .659, 203 BRG	1.000 EA
35EP3100M02	FREP TEFC 203 BRG W/O GRSSR (RAISED FH MT	1.000 EA
35CB3801SP	CAPACITOR COVER, CAST	1.000 EA
34GS3002	GASKET, CAPACITOR BOX	1.000 EA
HA7010	CAPACITOR RETENTION CLAMP	1.000 EA
NS2501A02	INSULATOR, CAPACITOR BOX	1.000 EA
51XB1016A08	10-16X 1/2HXWSSLD SERTYB	2.000 EA
HW5100A03SP	WAVY WASHER (W1543-017)	1.000 EA
35EP3101B26	PULLEY ENCL 205 BRG W/O GRSSR W/SEAL	1.000 EA
HW4600B60	CR#9686 .984 X 1.499 X .25 SINGLE LIP	1.000 EA

Parts List (continued)		
Part Number	Description	Quantity
HW4600B32SP	V-RING SLINGER 1.000 X 1.540 X 0.240	1.000 EA
XY1032A02	10-32 HEX NUT DIRECTIONAL SERRATION	4.000 EA
51XB1214A16	12-14X1.00 HXWSSLD SERTYB	1.000 EA
35FH4005A32	IEC FH NO GRSR W/3 HOLES - W/AUTOPHERETI	1.000 EA
51XW1032A06	10-32 X .38, TAPTITE II, HEX WSHR SLTD S	3.000 EA
35CB4521GX	CONDUIT BOX LID KIT	1.000 EA
51XW0832A07	8-32 X .44, TAPTITE II, HEX WSHR SLTD SE	4.000 EA
HW2501D13SP	KEY, 3/16 SQ X 1.375	1.000 EA
HA7000A01	KEY RETAINER 7/8" DIA SHAFT	1.000 EA
85XU0407S04	4X1/4 U DRIVE PIN STAINLESS	2.000 EA
LB1087	LABEL,MANUAL RESET (ROLL LABEL)	1.000 EA
MJ5001A27	32220KN GRAY SEALER *MIN BUY 4 QTS=1GAL	0.001 QT
WD1000A15	3-520132-2 AMP FLAG (4M/RL NON-CANC/NON-	4.000 EA
MJ1000A75	GREASE, POLYREX EM EXXON (USe 4824-15A)	0.050 LB
35FN3002A05SP	EXFN, PLASTIC, 6.376 OD, .638 ID	1.000 EA
MG1025C02	RAL6081, LIGHT SUPER TAN, GLOSS 85,	0.017 GA
MG1025Z20	ACTIVATOR WILKOFASST 060.32	0.010 GA
HA3100A22	THRUBOLT 10-32 X 10.125	4.000 EA
TP5059	GENERIC THERMAL KIT	1.000 EA
SP5181A01	MODEL 35 LC TORQ STAT SWITCH LEAD ASSY	1.000 EA
NS2500A02	INSULATOR, MAN THER PROT	1.000 EA
LC0002	CONNECTION LABEL	1.000 EA
LB1119N	WARNING LABEL	1.000 EA
MN416A01	TAG-INSTAL-MAINT no wire (1200/bx) 11/14	1.000 EA

NP1280L	ALUM FARM DUTY UL CSA CC THERMAL	1.000 EA
36PA1000	PKG GRP, PRINT PK1016A06	1.000 EA

<b>Accessories</b>		
<b>Part Number</b>	<b>Description</b>	<b>Multiplier</b>
35-8762	C FACE KIT	A8
35EP1506A01SP	D-FLANGE KIT	A8

**AC Induction Motor Performance Data**  
Record # 41679 - Typical performance - not guaranteed values

<b>Winding:</b> 35WGN499-R001	<b>Type:</b> 3535LC	<b>Enclosure:</b> TEFC
-------------------------------	---------------------	------------------------

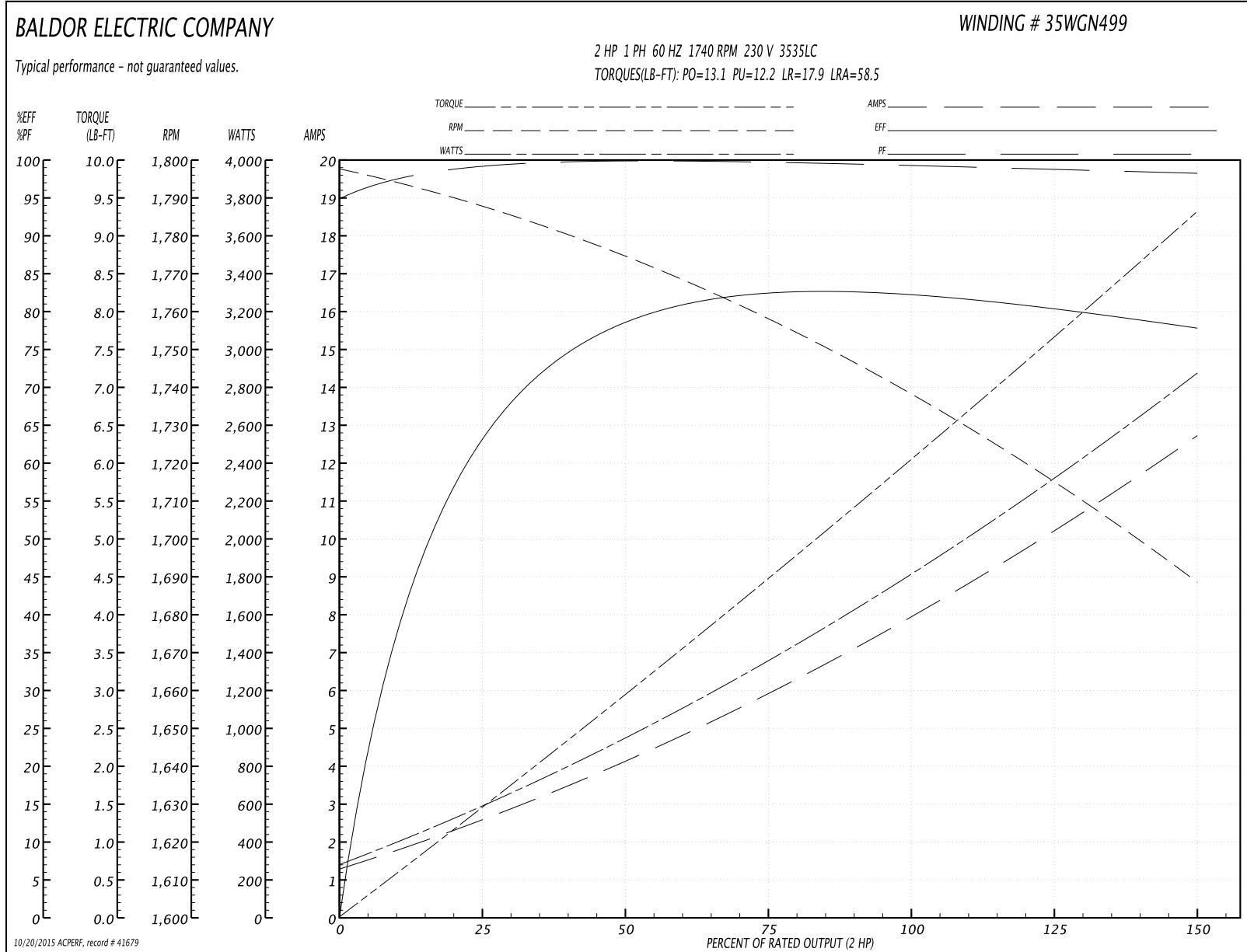
Nameplate Data				230 V, 60 Hz: Single Voltage Motor	
Rated Output (HP)	2			Full Load Torque	6.04 LB-FT
Volts	230			Start Configuration	direct on line
Full Load Amps	7.9			Breakdown Torque	13.1 LB-FT
R.P.M.	1740			Pull-up Torque	12.2 LB-FT
Hz	60	Phase	1	Locked-rotor Torque	17.9 LB-FT
NEMA Design Code	L	KVA Code	H	Starting Current	58.5 A
Service Factor (S.F.)	1.15			No-load Current	1.22 A
NEMA Nom. Eff.	82.5	Power Factor	99	Line-line Res. @ 25°C	1.5935 Ω A Ph 3.2782 Ω B Ph
Rating - Duty	40C AMB-CONT			Temp. Rise @ Rated Load	75°C
S.F. Amps				Temp. Rise @ S.F. Load	93°C

Load Characteristics 230 V, 60 Hz, 2 HP

% of Rated Load	25	50	75	100	125	150	S.F.
Power Factor	99	100	100	99	99	98	99
Efficiency	61.1	77.4	82.1	83.1	81.2	77.3	82
Speed	1786.6	1773.4	1758.2	1739.3	1717.4	1687	1726
Line amperes	2.65	4.18	5.92	7.87	10.1	12.8	9.21



Performance Graph at 230V, 60Hz, 2.0HP Typical performance - Not guaranteed values



**AC Induction Motor Performance Data**

Record # 42038 - Typical performance - not guaranteed values

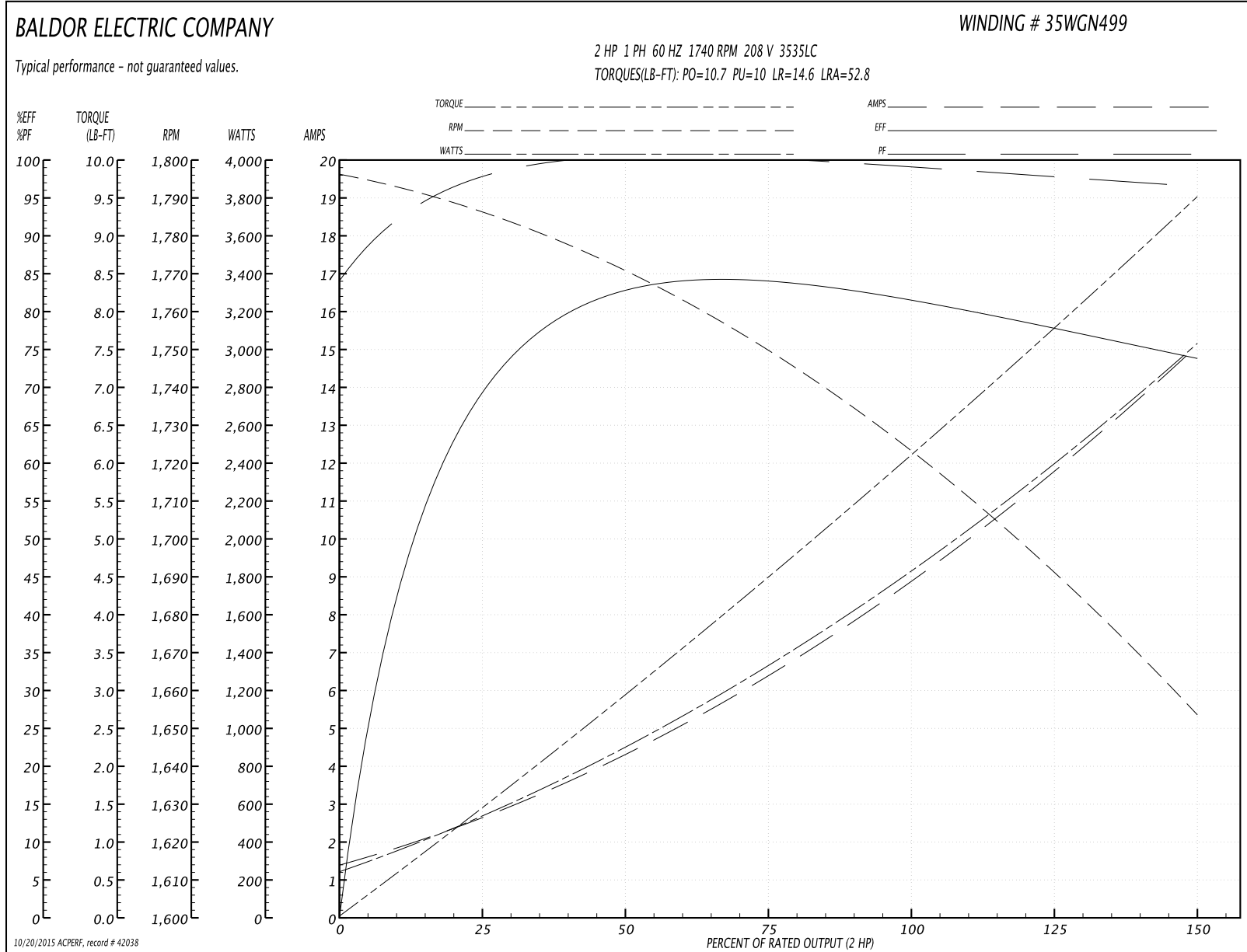
<b>Winding:</b> 35WGN499-R001	<b>Type:</b> 3535LC	<b>Enclosure:</b> TEFC
-------------------------------	---------------------	------------------------

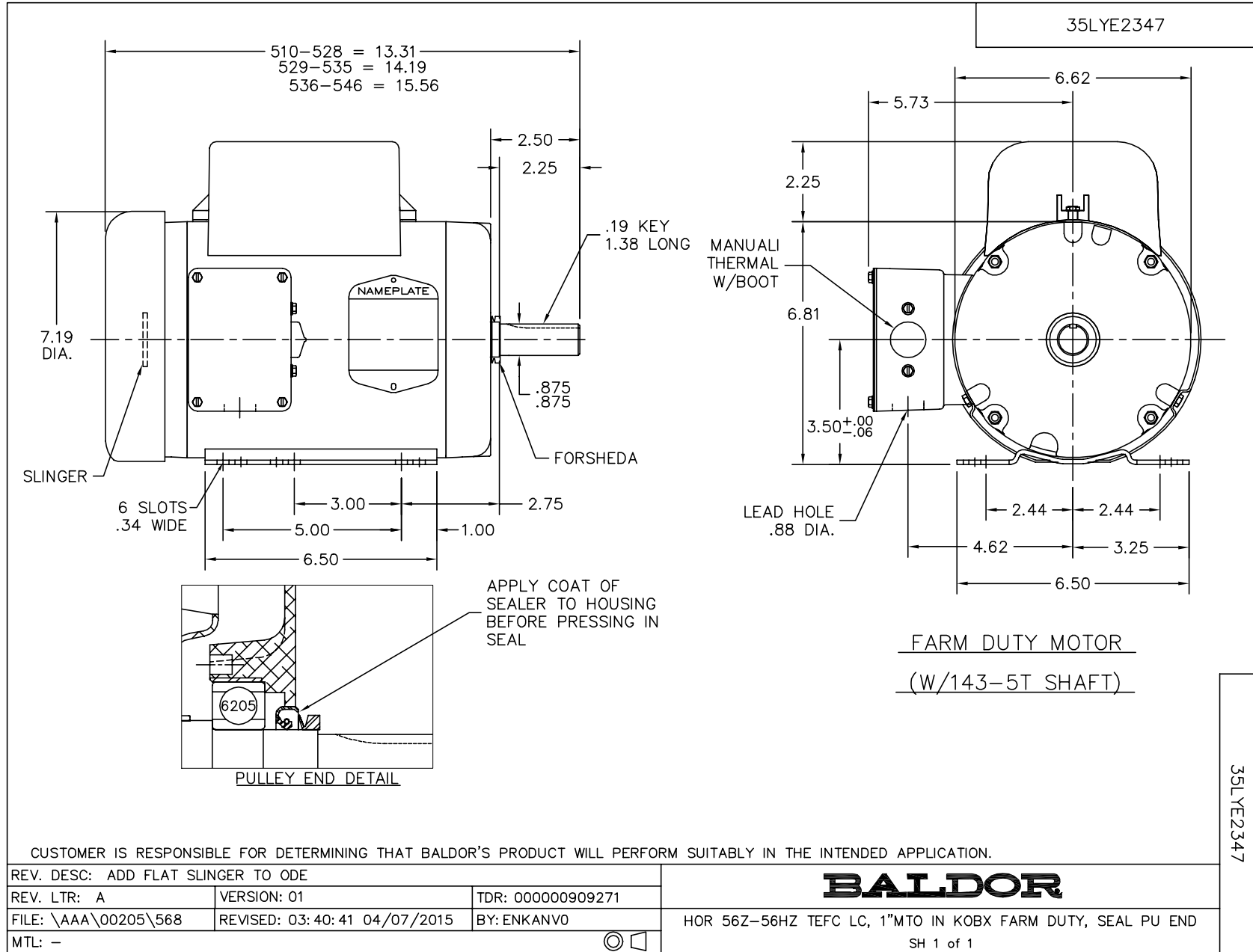
Nameplate Data				208 V, 60 Hz: Single Voltage Motor	
Rated Output (HP)	2			Full Load Torque	6.09 LB-FT
Volts	230			Start Configuration	direct on line
Full Load Amps	7.9			Breakdown Torque	10.7 LB-FT
R.P.M.	1740			Pull-up Torque	10 LB-FT
Hz	60	Phase	1	Locked-rotor Torque	14.6 LB-FT
NEMA Design Code	L	KVA Code	H	Starting Current	52.8 A
Service Factor (S.F.)	1			No-load Current	1.25 A
NEMA Nom. Eff.	82.5	Power Factor	99	Line-line Res. @ 25°C	1.62 Ω A Ph 3.25 Ω B Ph
Rating - Duty	40C AMB-CONT			Temp. Rise @ Rated Load	90°C

Load Characteristics 208 V, 60 Hz, 2 HP

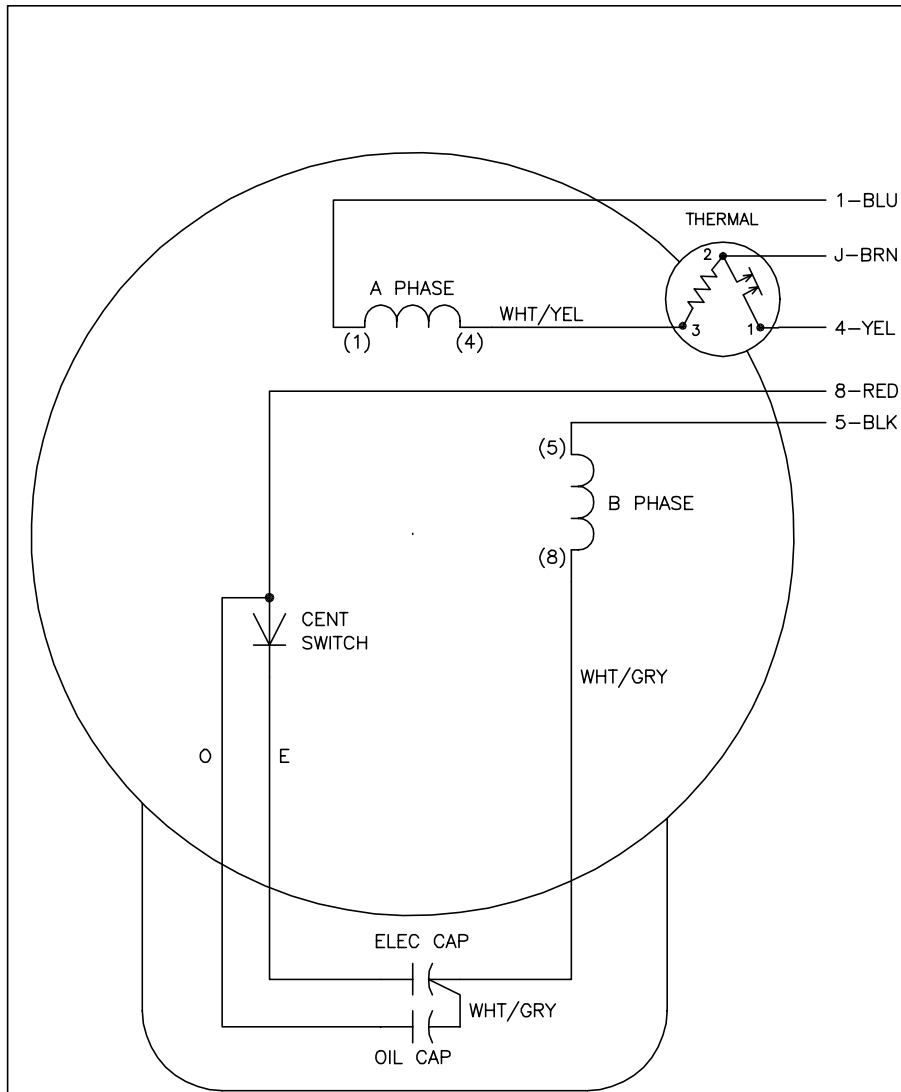
% of Rated Load	25	50	75	100	125	150
Power Factor	98	100	100	99	98	96
Efficiency	66	80.6	83.2	82.8	79.4	73
Speed	1784	1768	1749	1726	1696	1650
Line amperes	2.75	4.46	6.44	8.73	11.5	15.3

Performance Graph at 208V, 60Hz, 2.0HP Typical performance - Not guaranteed values





CD0002A02



	LINE A	LINE B	JOIN
STD	1,8	4	J,5
OPP	1,5	4	J,8

NOTES:

1. STANDARD ROTATION IS CCW FACING END OPPOSITE SHAFT EXTENSION.
2. MULTIPLE CAPACITORS ARE CONNECTED IN PARALLEL UNLESS OTHERWISE SPECIFIED.
3. LEAD COLORS ARE OPTIONAL. LEADS MUST ALWAYS BE NUMBERED AS SHOWN.

REV. DESC: REMOVE 2-TERMINAL THERMAL DETAIL, SEE CD0002A04			
REV. LTR: D	VERSION: 01	TDR: 000000360649	
Z0VZ00000 CD0002A02	FILE: \AAA\00007\520	REVISED: 17:11:40 04/15/2005	
	MTL: -	BY: ENJOEPO	

**BALDOR ELECTRIC Co.**

TYPE LC, SV, REV, THERMAL, 5 LEADS

CD0002A02