

BALDOR® • **RELIANCE**

Product Information Packet

EM2562T-4

200HP,3560RPM,3PH,60HZ,444TS,1860M,OPEN

| Part Detail | | | | | | | |
|-------------|-------|----------------|---------|-------------|-----------|---------------|------------|
| Revision: | H | Status: | PRD/A | Change #: | | Proprietary: | No |
| Type: | AC | Prod. Type: | A44056M | Elec. Spec: | A44WG1511 | CD Diagram: | 416820-008 |
| Enclosure: | DP | Mfg Plant: | | Mech. Spec: | | Layout: | 617428-044 |
| Frame: | 444TS | Mounting: | F1 | Poles: | 02 | Created Date: | 10-19-2010 |
| Base: | | Rotation: | R | Insulation: | B | Eff. Date: | 09-16-2013 |
| Leads: | 6#1 | | | | | Replaced By: | |
| Literature: | | Elec. Diagram: | | | | | |

| Nameplate NP2377L | | | | | | | | | |
|-------------------|------------|-------------------------|----------|-----------------------|------|-------------|----|----|------|
| CAT.NO. | EM2562T-4 | SPEC NO. | P44G4413 | | | | | | |
| HP | 200 | AMPS | 221 | VOLTS | 460 | DESIGN | B | | |
| FRAME | 444TS | RPM | 3565 | HZ | 60 | AMB | 40 | SF | 1.15 |
| DRIVE END BEARING | 65BC03J30X | PHASE | 3 | DUTY | CONT | INSUL.CLASS | B | | |
| OPP D.E. BEARING | 65BC03J30X | TYPE | P | ENCL | DP | CODE | F | | |
| SER.NO. | | POWER FACTOR | 88.5 | NEMA-NOM-EFFICIENCY | 95.4 | | | | |
| | | MAX CORR KVAR | 30.0 | GUARANTEED EFFICIENCY | 95.0 | | | | |
| | | NEMA NOM/CSA QUOTED EFF | | | | | | | |
| | | MOTOR WEIGHT | 1364 | | | | | | |

| Parts List | | |
|-------------|--|----------|
| Part Number | Description | Quantity |
| SA205595 | SA P44G4413 | 1.000 EA |
| RA192863 | RA P44G4413 | 1.000 EA |
| 000613006PU | N/P UL CSA LABEL | 1.000 EA |
| 000692000VD | LABEL WARNING | 1.000 EA |
| NP2377L | SS SUPER-E CC CSA-C US CSA-EEV (LASER) | 1.000 EA |
| 421948044 | LABEL, MYLAR | 1.000 EA |
| 004824015A | GREASE POLYREX EM | 0.544 LB |
| 032018028CK | HHCS 3/8-16X3-1/2 PLTD. | 3.000 EA |
| 032018028EK | HHCS 5/8-11X3-1/2L PLTD | 4.000 EA |
| 034000012AB | WSHR 1/4 STD. PLATED | 4.000 EA |
| 034017012AB | LCKW 1/4 STD. PLATED | 4.000 EA |
| 034600001AA | BUSH 1/4TO1/8 BLACK | 1.000 EA |
| 035000001G | GREASE RELIEF FITTING, ALEMITE 317400 | 1.000 EA |
| 089438082A | BRKT 440 089438081WCB | 1.000 EA |
| 702611001A | BAFFL 440 SUB PAINT | 1.000 EA |
| 089438082A | BRKT 440 089438081WCB | 1.000 EA |
| 405851012AC | SPACE | 4.000 EA |
| 410700004F | WSHR | 1.000 EA |
| 702611001A | BAFFL 440 SUB PAINT | 1.000 EA |
| 032018028CK | HHCS 3/8-16X3-1/2 PLTD. | 3.000 EA |
| 032018028EK | HHCS 5/8-11X3-1/2L PLTD | 4.000 EA |
| 034000012AB | WSHR 1/4 STD. PLATED | 4.000 EA |
| 034017012AB | LCKW 1/4 STD. PLATED | 4.000 EA |
| 034600001AA | BUSH 1/4TO1/8 BLACK | 1.000 EA |

| Parts List (continued) | | |
|------------------------|---|----------|
| Part Number | Description | Quantity |
| 035000001G | GREASE RELIEF FITTING, ALEMITE 317400 | 1.000 EA |
| 032018008DK | HHCS 1/2-13X1 PLATED | 4.000 EA |
| 033512004LB | HHTTS 1/4-20X1/2 PLTD. | 1.000 EA |
| 033512006LB | HHTTS 1/4-20X3/4 PLTD. | 8.000 EA |
| 035000001A | ALFTG 1/8" 1610-BL | 1.000 EA |
| 035000001A | ALFTG 1/8" 1610-BL | 1.000 EA |
| 048897010DG | PLUG,ODE BRKT - 360 | 1.000 EA |
| 415000103D | T/LUG #4AWG-1/0AWG W/HOLE FOR .250 BOLT | 1.000 EA |
| 418150003A | GREASE FITTING CAP | 1.000 EA |
| 418150003A | GREASE FITTING CAP | 1.000 EA |
| 702658001A | CONDUIT BOX, E440 | 1.000 EA |
| 702658002A | +C/BOX CVR, PAINTED 440 | 1.000 EA |
| MG1000Y03 | MUNSELL 2.53Y 6.70/ 4.60, GLOSS 20, | 0.250 GA |
| LB1346N | LABEL,SUPER-E GP(4X4) | 1.000 EA |
| 033775004EA | DRSCR #6-1/4 304 S.S. | 2.000 EA |
| 034180024HA | KEY 5/8X5/8X3 L | 1.000 EA |
| 405851012AC | SPACE | 4.000 EA |
| 032018012AK | HHCS 1/4-20X1-1/2 PLTD. | 4.000 EA |
| 032018012AK | HHCS 1/4-20X1-1/2 PLTD. | 4.000 EA |
| PK5004A09 | BASE 48 X 39-1/4 STACK 2 X 4 RUUNER | 1.000 EA |

| | | | | | | |
|-----------|--------------|-------------------|-----------|---------------------------------------|-------------|-------|
| REL. S.O. | FRAME | HP | TYPE | PHASE/HERTZ | RPM | VOLTS |
| | 444TS | 200 | P | 3/60 | 3565 | 460 |
| AMPS | DUTY | AMB °C/ INSUL. | S.F. | NEMA DESIGN | CODE LETTER | ENCL. |
| 221 | CONT | 40/B | 1.15 | B | F | PROT |
| E/S | ROTOR | TEST S.O. | TEST DATE | STATOR RES. @25 °C (BETWEEN LINES) | | |
| 497748 | 418143-14-CE | --- | --- | .0299 | | |

| PERFORMANCE | | | | | | |
|-------------|------|---------|------|----------------|--------------|--|
| LOAD | HP | AMPERES | RPM | POWER FACTOR % | EFFICIENCY % | |
| NO LOAD | 0 | 54.8 | 3600 | 4.98 | 0 | |
| 1/4 | 50.1 | 73.6 | 3592 | 67.9 | 93.8 | |
| 2/4 | 100 | 112 | 3584 | 87.4 | 95.8 | |
| 3/4 | 150 | 162 | 3575 | 90.4 | 95.9 | |
| 4/4 | 200 | 221 | 3566 | 88.6 | 95.6 | |
| 5/4 | 250 | 289 | 3556 | 85.1 | 95.1 | |

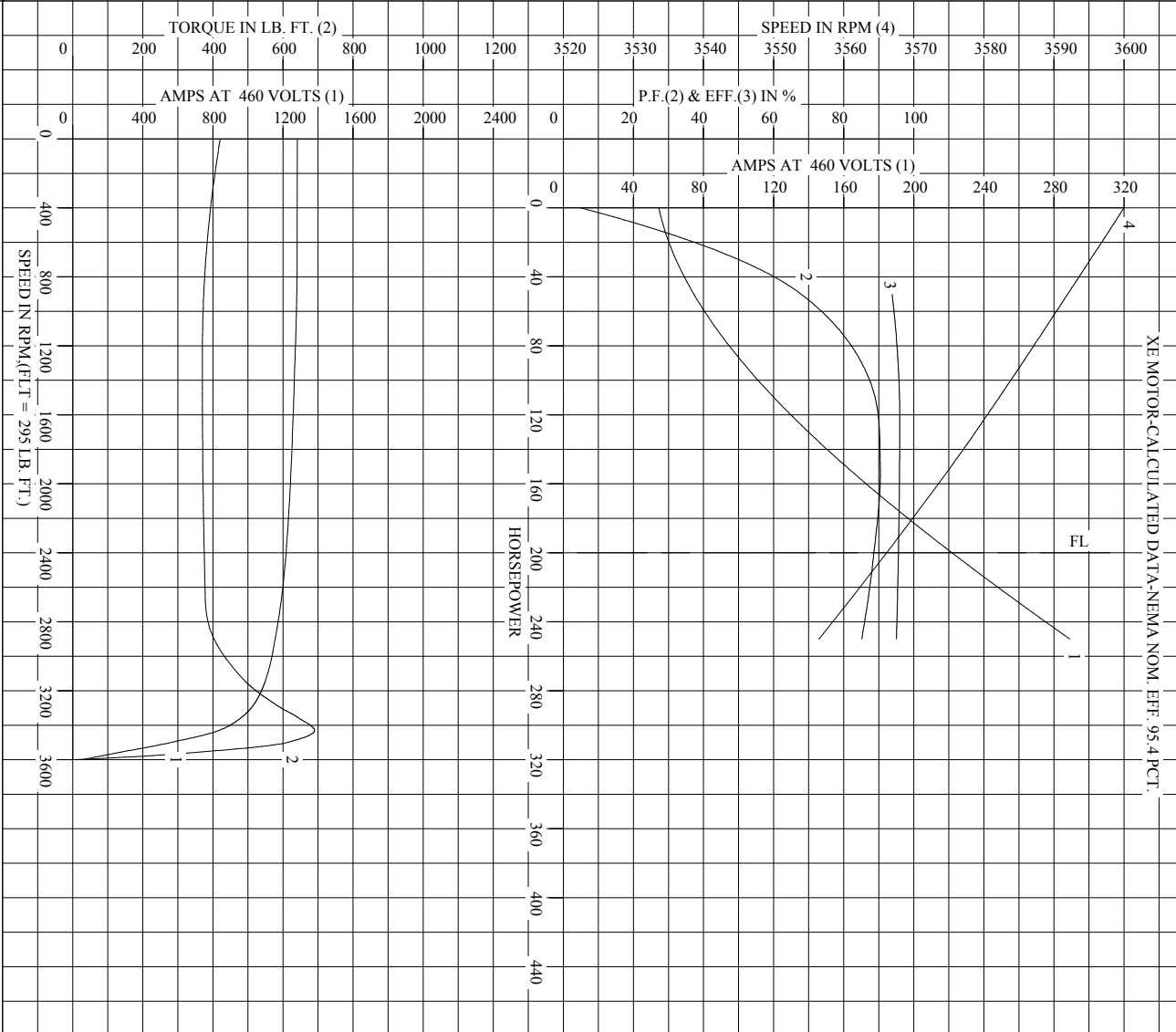
| SPEED TORQUE | | | | | | |
|--------------|------|--------------------|----------------|---------|--|--|
| | RPM | TORQUE % FULL LOAD | TORQUE LB.-FT. | AMPERES | | |
| LOCKED ROTOR | 0 | 143 | 421 | 1282 | | |
| PULL UP | 1240 | 126 | 370 | 1270 | | |
| BREAKDOWN | 3431 | 234 | 690 | 835 | | |
| FULL LOAD | 3566 | 100 | 295 | 221 | | |

AMPERES SHOWN FOR 460. VOLT CONNECTION. IF OTHER VOLTAGE CONNECTIONS ARE AVAILABLE, THE AMPERES WILL VARY INVERSELY WITH THE RATED VOLTAGE

REMARKS: TYPICAL DATA
 XE MOTOR-CALCULATED DATA-NEMA NOM. EFF. 95.4 PCT.

| | | | | |
|---------------|---------|----------------|-----------------------------------|----------|
| BALDOR | DR. BY | J. J. HARRISON | A-C MOTOR PERFORMANCE DATA | |
| | CK. BY | W. I. SMITH | | |
| | APP. BY | W. I. SMITH | | |
| | DATE | 04/29/10 | ISSUE DATE | 12/18/10 |

REL. S. O. _____ RPM 3565 S. F. 1.15 ROTOR 418143-14-CE
 FRAME 444TS VOLTS 460 NEMA DESIGN B TEST S. O. TYPICAL DATA
 HP 200 AMPS 221 DUTY CONT F CODE LETTER F
 TYPE P AMB °C/INSUL 40/B ENCLOSURE PROT STATOR RES. @ 25 °C .0299
 PHASE/HERTZ 3/60 OHMS (BETWEEN LINES)

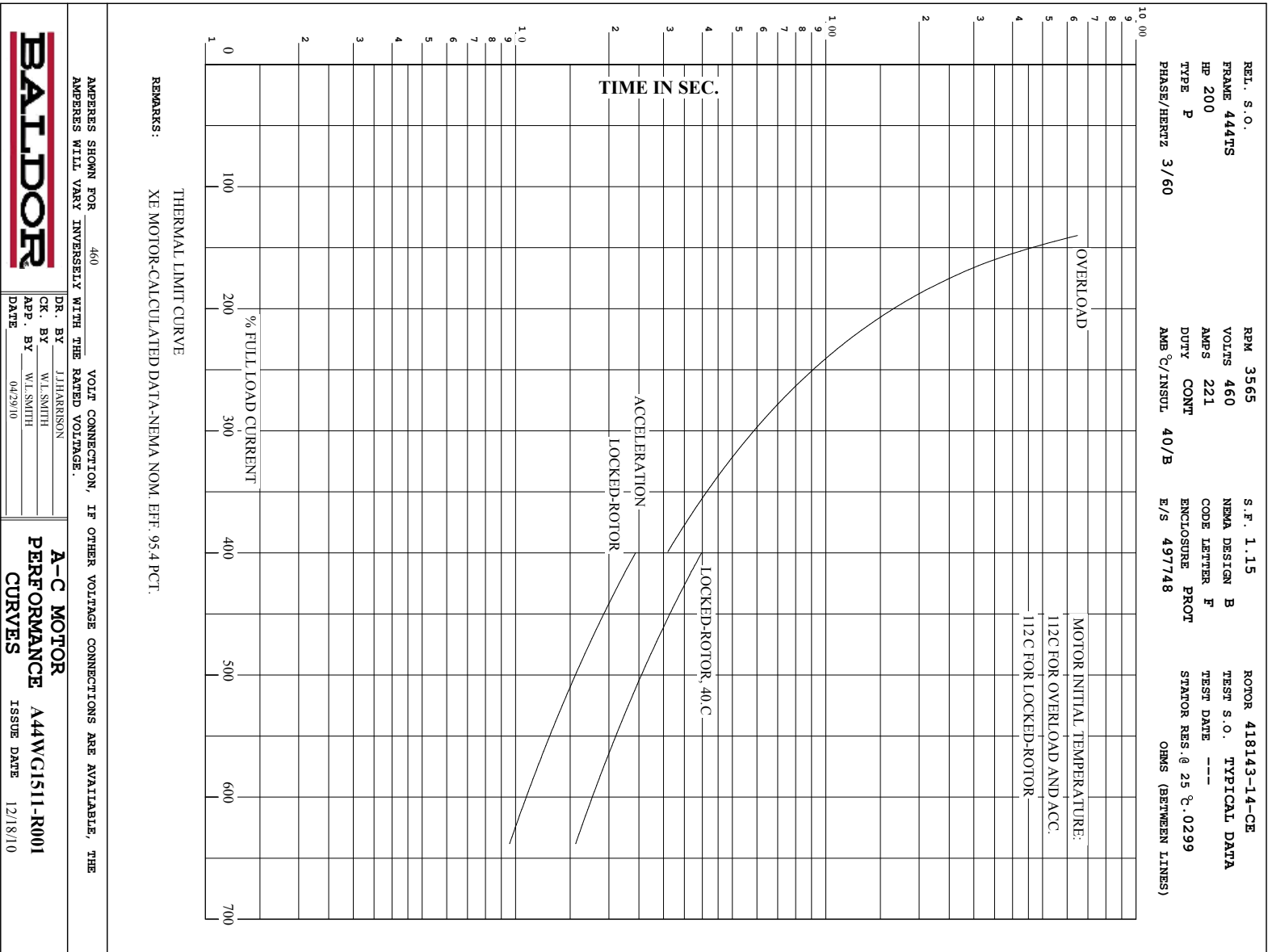


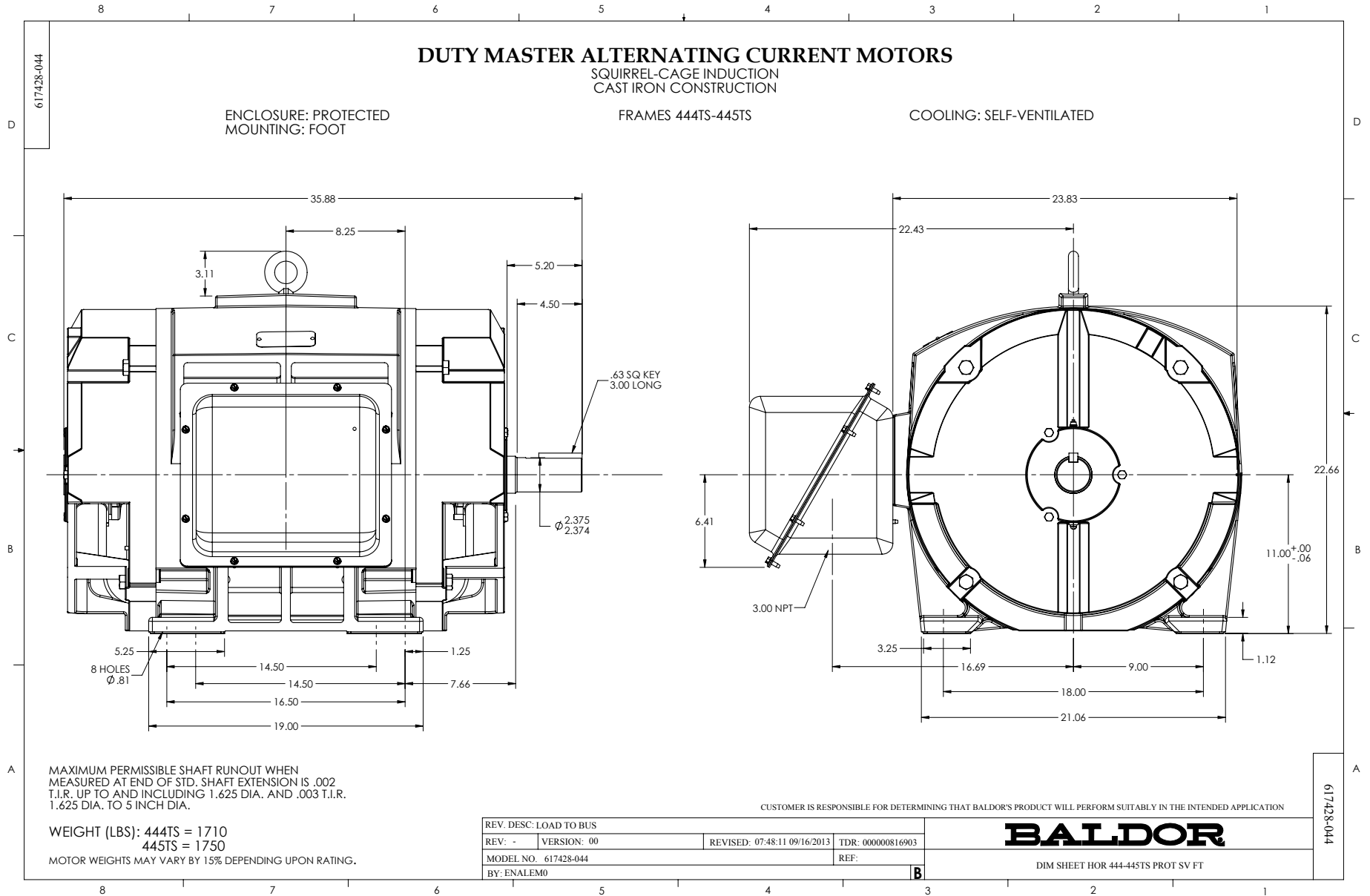
AMPERES SHOWN FOR 460 VOLT CONNECTION, IF OTHER VOLTAGE CONNECTIONS ARE AVAILABLE, THE AMPERES WILL VARY INVERSELY WITH THE RATED VOLTAGE.

BALDOR
 DR. BY J. HARRISON
 CK. BY W. L. SMITH
 APP. BY W. L. SMITH
 DATE 04/29/10

A-C MOTOR PERFORMANCE CURVES
 A44WG1511-R001
 ISSUE DATE 12/18/10

Printed on 12/18/10 6:20 @ pscs-motoreng



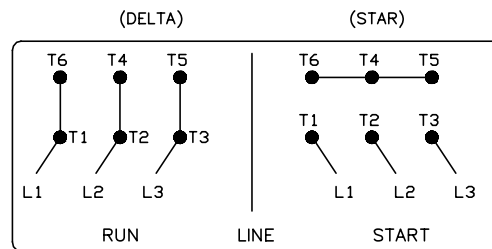
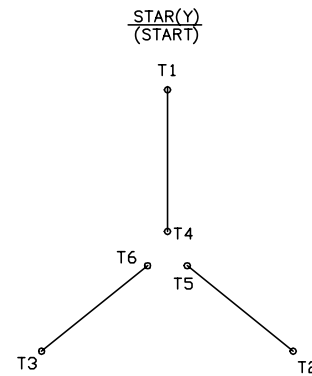
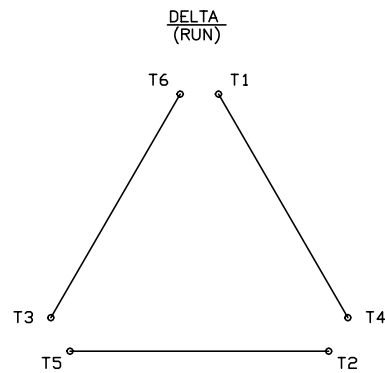


416820-008

A-C MOTOR CONNECTION DIAGRAM

STANDARD 6 LEAD

Y START - DELTA RUN



< N. P. 1767-DC >

416820-008

| | | |
|--|--------------------------------|-------------------|
| REV. DESC: ADDED T4 TO Y CONNECT DIAGRAM | | |
| REV. LTR: D | VERSION: 04 | TDR: 000000847713 |
| FILE: \RAG\00001\808 | REVISED: 10: 41: 26 04/08/2014 | BY: RAGJSS1 |
| MTL: - | Ⓢ □ | |

BALDOR

CONNECT DIAGRAM STD 6 LEAD Y START DELTA RUN

SH 1 of 1

Marketing maintained PDF of MN408:

<http://www.baldor.com/support/Literature/Load.ashx/MN408?ManNumber=MN408>

Marketing maintained PDF of MN416:

<http://www.baldor.com/support/Literature/Load.ashx/MN416?ManNumber=MN416>