

BALDOR® • ***RELIANCE***

Product Information Packet

AOM3704T

3 AIR OVERHP, 1155RPM, 3PH, 60HZ, 213T, 3720M

| Part Detail | | | | | | | |
|-------------|---------------|----------------|-------|-------------|----------|---------------|------------|
| Revision: | D | Status: | PRD/A | Change #: | | Proprietary: | No |
| Type: | AC | Prod. Type: | 3720M | Elec. Spec: | 37WGS065 | CD Diagram: | CD0005 |
| Enclosure: | TEAO | Mfg Plant: | | Mech. Spec: | 37F359 | Layout: | 37LYF359 |
| Frame: | 213T | Mounting: | F1 | Poles: | 06 | Created Date: | 11-30-2010 |
| Base: | RG | Rotation: | R | Insulation: | F | Eff. Date: | 07-27-2015 |
| Leads: | 9#14 36" LG Y | | | | | Replaced By: | |
| Literature: | | Elec. Diagram: | | | | | |

| | | | | | | | |
|--------------------------|--------------------|----------------|------|-----|---|-------|---|
| Nameplate NP1256L | | | | | | | |
| CAT.NO. | AOM3704T | | | | | | |
| SPEC. | 37F359S065G1 | | | | | | |
| HP | 3 AIR OVER | | | | | | |
| VOLTS | 208-230/460 | | | | | | |
| AMP | 10.4-9.6/4.8 | | | | | | |
| RPM | 1155 | | | | | | |
| FRAME | 213T | HZ | 60 | PH | 3 | | |
| SER.F. | 1.00 | CODE | H | DES | B | CLASS | F |
| NEMA-NOM-EFF | 84 | PF | 70 | | | | |
| RATING | 40C AMB-CONT | | | | | | |
| CC | | USABLE AT 208V | | | | | |
| DE | 6307 | ODE | 6206 | | | | |
| ENCL | TEAO | SN | | | | | |
| | 1275 FPM AT 170CFM | | | | | | |

| Parts List | | |
|-------------|--|----------|
| Part Number | Description | Quantity |
| SA213457 | SA 37F359S065G1 | 1.000 EA |
| RA200678 | RA 37F359S065G1 | 1.000 EA |
| HW3200A01 | 3/8-16X3/4 I-BLT WELDED F/S | 1.000 EA |
| 37CB3004 | 37 CB CASTING W/1.09 LEAD HOLE @ 6:00 | 1.000 EA |
| 37GS1000SP | GASKET, CONDUIT BOX STD., .06 THICK LEXI | 1.000 EA |
| 10XN2520A10 | 1/4-20X 5/8 HEX HD X | 2.000 EA |
| HW1001A25 | LOCKWASHER 1/4, ZINC PLT .493 OD, .255 I | 2.000 EA |
| 11XW1032G06 | 10-32 X .38, TAPTITE II, HEX WSHR SLTD U | 1.000 EA |
| 37EP3101A02 | FR ENDPLATE, 37L&M-TENV MTR, MACH | 1.000 EA |
| HW4500A01 | 1641B(ALEMITE)400 UNIV, GREASE FITT | 1.000 EA |
| HW5100A06 | W2420-025 WVY WSHR (WB) | 1.000 EA |
| 37EP3100A09 | PU ENDPLATE, MACH | 1.000 EA |
| HW4500A01 | 1641B(ALEMITE)400 UNIV, GREASE FITT | 1.000 EA |
| 10XN2520A28 | 1/4-20X 1 3/4 HEX HD | 4.000 EA |
| HW1001A25 | LOCKWASHER 1/4, ZINC PLT .493 OD, .255 I | 4.000 EA |
| XY3118A12 | 5/16-18 HEX NUT DIRECTIONAL SERRATION | 4.000 EA |
| 37CB4516 | LIPPED LID FOR 37 FRAME NEC KOBX | 1.000 EA |
| 37GS1008SP | 37 GS FOR CB LID - LEXIDE | 1.000 EA |
| 51XW0832A07 | 8-32 X .44, TAPTITE II, HEX WSHR SLTD SE | 4.000 EA |
| HW2501F21 | KEY, 5/16 SQ X 2.375 | 1.000 EA |
| HA7000A02 | KEY RETAINER RING, 1 1/8 DIA, 1 3/8 DIA | 1.000 EA |
| 85XU0407S04 | 4X1/4 U DRIVE PIN STAINLESS | 2.000 EA |
| LB1115N | LABEL,LIFTING DEVICE (ON ROLLS) | 1.000 EA |
| MJ1000A75 | GREASE, POLYREX EM EXXON (USe 4824-15A) | 0.050 LB |

| Parts List (continued) | | |
|-------------------------------|--|-----------------|
| Part Number | Description | Quantity |
| MG1000G27 | MED CHARCOAL METALLIC GREY | 0.028 GA |
| HA3104A14 | THRUBOLT- 5/16-18 X12.125(OHIO) | 4.000 EA |
| LC0005E01 | CONN.DIA./WARNING LABEL (LC0005/LB1119N) | 1.000 EA |
| NP1256L | ALUM UL CSA CC | 1.000 EA |
| 36PA1001 | PKG GRP, PRINT PK1017A06 | 1.000 EA |
| MN416A01 | TAG-INSTAL-MAINT no wire (1200/bx) 11/14 | 1.000 EA |

| Accessories | | |
|--------------------|--------------------|-------------------|
| Part Number | Description | Multiplier |
| 37-3301 | C FACE KIT | P1 |

AC Induction Motor Performance Data

Record # 37120 - Typical performance - not guaranteed values

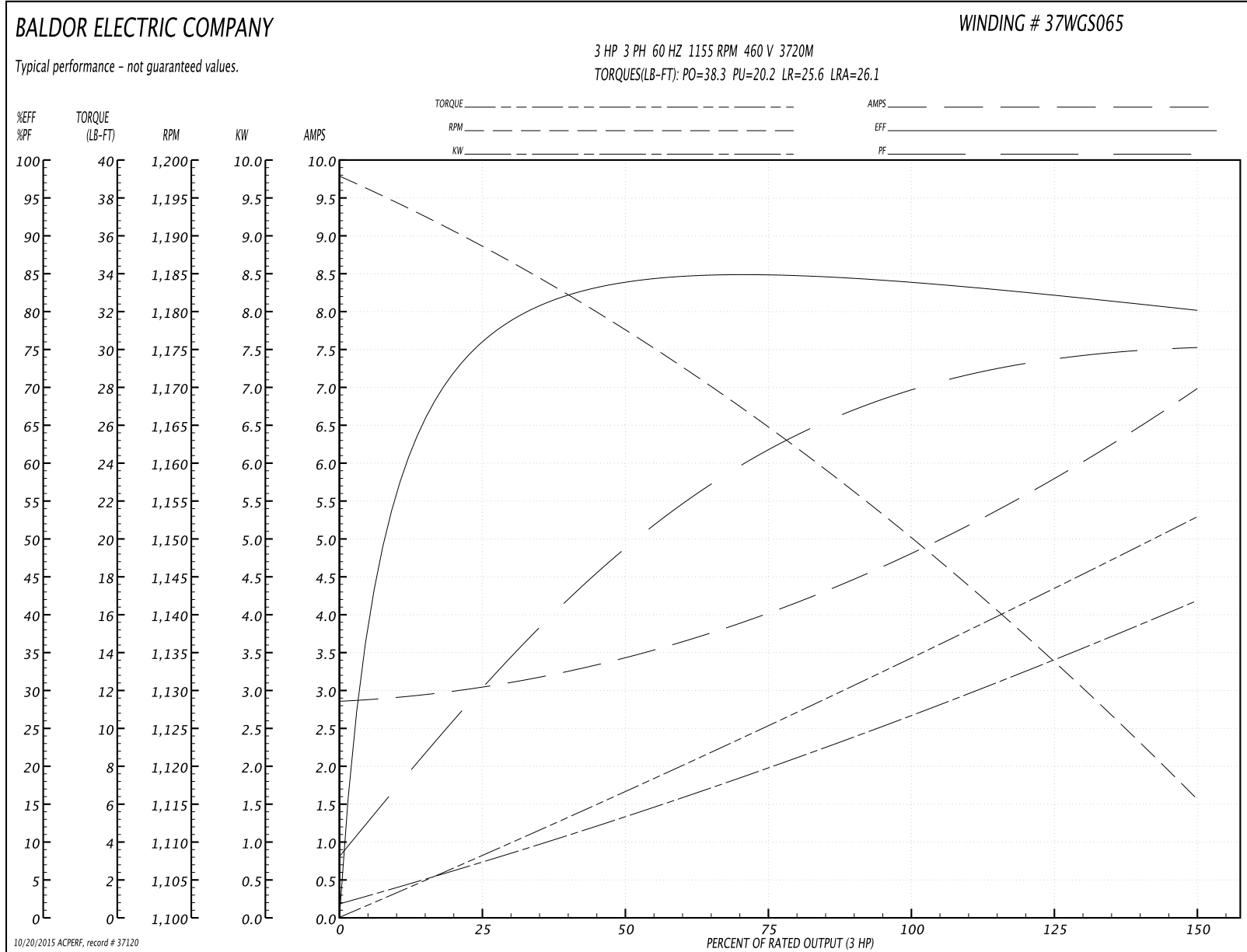
| | | |
|-------------------------------|--------------------|------------------------|
| Winding: 37WGS065-R011 | Type: 3720M | Enclosure: TEAO |
|-------------------------------|--------------------|------------------------|

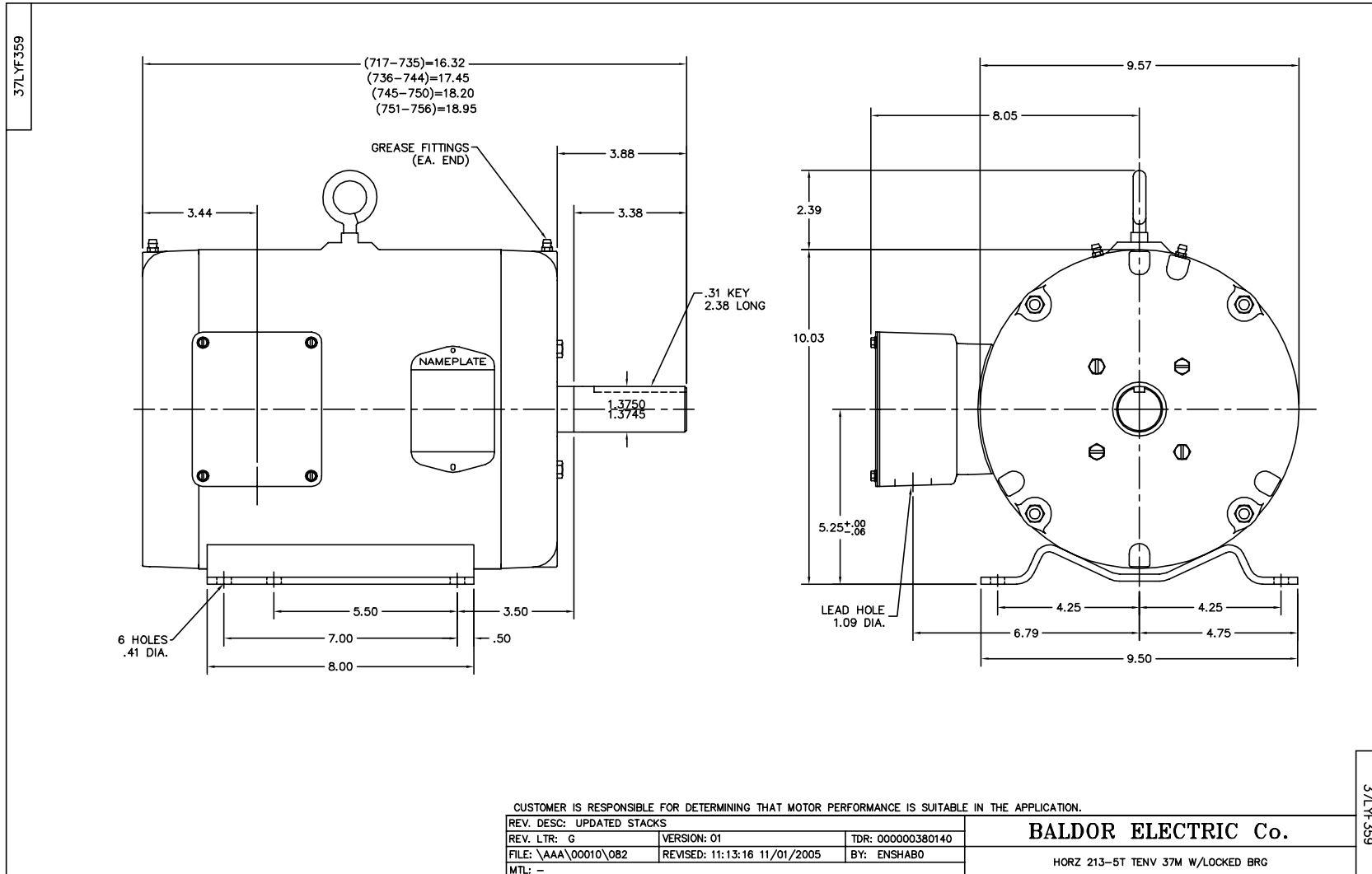
| Nameplate Data | | | | 460 V, 60 Hz: High Voltage Connection | |
|-----------------------|--------------|--------------|----|--|--------------------------|
| Rated Output (HP) | 3 AIR OVER | | | Full Load Torque | 13.7 LB-FT |
| Volts | 208-230/460 | | | Start Configuration | direct on line |
| Full Load Amps | 10.4-9.6/4.8 | | | Breakdown Torque | 38.3 LB-FT |
| R.P.M. | 1155 | | | Pull-up Torque | 20.2 LB-FT |
| Hz | 60 | Phase | 3 | Locked-rotor Torque | 25.6 LB-FT |
| NEMA Design Code | B | KVA Code | H | Starting Current | 26.1 A |
| Service Factor (S.F.) | 1 | | | No-load Current | 2.9 A |
| NEMA Nom. Eff. | 84 | Power Factor | 70 | Line-line Res. @ 25°C | 4.61 Ω |
| Rating - Duty | 40C AMB-CONT | | | Temp. Rise @ Rated Load | 62°C |
| | | | | Rotor inertia | 0.497 LB-FT ² |

Load Characteristics 460 V, 60 Hz, 3 HP

| % of Rated Load | 25 | 50 | 75 | 100 | 125 | 150 |
|-----------------|------|------|------|------|------|------|
| Power Factor | 32 | 50 | 62 | 69 | 73 | 76 |
| Efficiency | 75.1 | 82.4 | 85 | 84.3 | 82.7 | 79.8 |
| Speed | 1187 | 1177 | 1165 | 1151 | 1134 | 1115 |
| Line amperes | 2.99 | 3.41 | 4.04 | 4.85 | 5.82 | 6.96 |

Performance Graph at 460V, 60Hz, 3.0HP Typical performance - Not guaranteed values

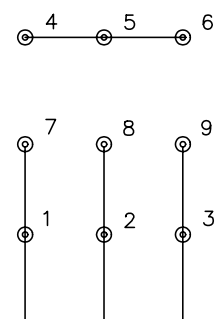




CD0005

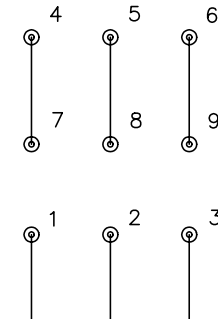


LOW VOLTAGE
(2Y)



LINE

HIGH VOLTAGE
(1Y)



LINE

NOTES:

1. INTERCHANGE ANY TWO LINE LEADS TO REVERSE ROTATION.
2. OPTIONAL THERMOSTATS ARE PROVIDED WHEN SPECIFIED.
3. ACTUAL NUMBER OF INTERNAL PARALLEL CIRCUITS MAY BE A MULTIPLE OF THOSE SHOWN ABOVE.
4. LEAD COLORS ARE OPTIONAL. LEADS MUST ALWAYS BE NUMBERED AS SHOWN.

| | | | |
|---|---------|-------------------------|--------------|
| REV. DESC: REVISE TO SHOW OPTIONAL COLORS | | | |
| REV. LTR: E | BY: JLP | REVISED: 01/19/99 10:15 | TDR: 0171435 |
| 900000 | | FILE: AAA00005140 | MDL: - |
| | | MTL: - | |

BALDOR ELECTRIC Co.

3PH, DV, 9 LEADS

CD0005