

# **BALDOR**® • ***RELIANCE***

## **Product Information Packet**

# **AOM3458**

**.33HP, 1725RPM, 3PH, 60HZ, 48, 3410M, TEAO, F1**

| Part Detail |               |                |       |             |          |               |            |
|-------------|---------------|----------------|-------|-------------|----------|---------------|------------|
| Revision:   | P             | Status:        | PRD/A | Change #:   |          | Proprietary:  | No         |
| Type:       | AC            | Prod. Type:    | 3410M | Elec. Spec: | 34WGW137 | CD Diagram:   | CD0005     |
| Enclosure:  | TEAO          | Mfg Plant:     |       | Mech. Spec: | 34K099   | Layout:       | 34LYK099   |
| Frame:      | 48            | Mounting:      | F1    | Poles:      | 04       | Created Date: |            |
| Base:       | RG            | Rotation:      | R     | Insulation: | F        | Eff. Date:    | 09-10-2009 |
| Leads:      | 9#18 36" LG Y |                |       |             |          | Replaced By:  |            |
| Literature: |               | Elec. Diagram: |       |             |          |               |            |

|                          |                   |                |      |     |   |       |   |
|--------------------------|-------------------|----------------|------|-----|---|-------|---|
| <b>Nameplate NP1256L</b> |                   |                |      |     |   |       |   |
| CAT.NO.                  | AOM3458           |                |      |     |   |       |   |
| SPEC.                    | 34K99W137         |                |      |     |   |       |   |
| HP                       | .33 AIR OVER      |                |      |     |   |       |   |
| VOLTS                    | 230/460           |                |      |     |   |       |   |
| AMP                      | 1.7/.85           |                |      |     |   |       |   |
| RPM                      | 1725              |                |      |     |   |       |   |
| FRAME                    | 48                | HZ             | 60   | PH  | 3 |       |   |
| SER.F.                   | 1.00              | CODE           | M    | DES | B | CLASS | F |
| NEMA-NOM-EFF             | 68                | PF             | 53   |     |   |       |   |
| RATING                   | 40C AMB-CONT      |                |      |     |   |       |   |
| CC                       |                   | USABLE AT 208V | 1.9  |     |   |       |   |
| DE                       | 6203              | ODE            | 6203 |     |   |       |   |
| ENCL                     | TEAO              | SN             |      |     |   |       |   |
|                          | 800 FPM AT 44 CFM |                |      |     |   |       |   |

| Parts List    |  |          |
|---------------|--|----------|
| Part Number   | Description                              | Quantity |
| SA008238      | SA 34K99W137                             | 1.000 EA |
| RA004685      | RA 34K99W137                             | 1.000 EA |
| NS2512A01     | INSULATOR, CONDUIT BOX X                 | 1.000 EA |
| 34CB3002A     | CB CAST W/.88 DIA HOLE                   | 1.000 EA |
| 34GS1029A01   | GASKET, CONDUIT BOX                      | 1.000 EA |
| 51XB1016A07   | 10-16 X 7/16 HXWSSLD SERTYB              | 2.000 EA |
| 11XW1032G06   | 10-32 X .38, TAPTITE II, HEX WSHR SLTD U | 1.000 EA |
| 34EP3100A03SP | FR ENDPLATE, MACH                        | 1.000 EA |
| HW5100A03SP   | WAVY WASHER (W1543-017)                  | 1.000 EA |
| 34EP3102A02SP | FR/PU ENDPLATE, MACH                     | 1.000 EA |
| XY1032A02     | 10-32 HEX NUT DIRECTIONAL SERRATION      | 4.000 EA |
| 34CB4517      | CB LID 4 MTG HOLES .22 DIA STAMPED, FOR  | 1.000 EA |
| 34GS1031A01   | GASKET, FLAT CONDUIT BOX LID (LEXIDE)    | 1.000 EA |
| 51XW0832A07   | 8-32 X .44, TAPTITE II, HEX WSHR SLTD SE | 4.000 EA |
| MG1000G27     | MED CHARCOAL METALLIC GREY               | 0.014 GA |
| 10XF0440S02   | 04-40 X 1/8 TYPE F HEX HD STAINLESS STIC | 2.000 EA |
| HA3100A12     | THRUBOLT 10-32 X 7.375                   | 4.000 EA |
| LC0005E01     | CONN.DIA./WARNING LABEL (LC0005/LB1119N) | 1.000 EA |
| NP1256L       | ALUM UL CSA CC                           | 1.000 EA |
| 34PA1002      | PKG GRP, PRINT PK1001A01                 | 1.000 EA |

| <b>Accessories</b> |                    |                   |
|--------------------|--------------------|-------------------|
| <b>Part Number</b> | <b>Description</b> | <b>Multiplier</b> |
| 34-3900T           | C-FACE KIT         | A8                |

**AC Induction Motor Performance Data**  
Record # 6892 - Typical performance - not guaranteed values

|                               |                    |                        |
|-------------------------------|--------------------|------------------------|
| <b>Winding:</b> 34WGW137-R001 | <b>Type:</b> 3410M | <b>Enclosure:</b> TEAO |
|-------------------------------|--------------------|------------------------|

| Nameplate Data        |              |              |    | 460 V, 60 Hz:<br>High Voltage Connection |                           |
|-----------------------|--------------|--------------|----|--|---------------------------|
| Rated Output (HP)     | .33 AIR OVER |              |    | Full Load Torque                         | 1 LB-FT                   |
| Volts                 | 230/460      |              |    | Start Configuration                      | direct on line            |
| Full Load Amps        | 1.7/.85      |              |    | Breakdown Torque                         | 4.5 LB-FT                 |
| R.P.M.                | 1725         |              |    | Pull-up Torque                           | 3.2 LB-FT                 |
| Hz                    | 60           | Phase        | 3  | Locked-rotor Torque                      | 3.5 LB-FT                 |
| NEMA Design Code      | B            | KVA Code     | M  | Starting Current                         | 4.5 A                     |
| Service Factor (S.F.) | 1            |              |    | No-load Current                          | 0.914 A                   |
| NEMA Nom. Eff.        | 68           | Power Factor | 53 | Line-line Res. @ 25°C                    | 51.6 Ω                    |
| Rating - Duty         | 40C AMB-CONT |              |    | Temp. Rise @ Rated Load                  | 60°C                      |
|                       |              |              |    | Rotor inertia                            | 0.0238 LB-FT <sup>2</sup> |

Load Characteristics 460 V, 60 Hz, 0.33 HP

| % of Rated Load | 25   | 50   | 75   | 100  | 125  | 150  |
|-----------------|------|------|------|------|------|------|
| Power Factor    | 26   | 35   | 43   | 50   | 57   | 64   |
| Efficiency      | 32   | 48   | 57   | 62   | 65   | 66   |
| Speed           | 1780 | 1765 | 1750 | 1733 | 1714 | 1694 |
| Line amperes    | 0.91 | 0.92 | 0.95 | 0.98 | 1.03 | 1.09 |

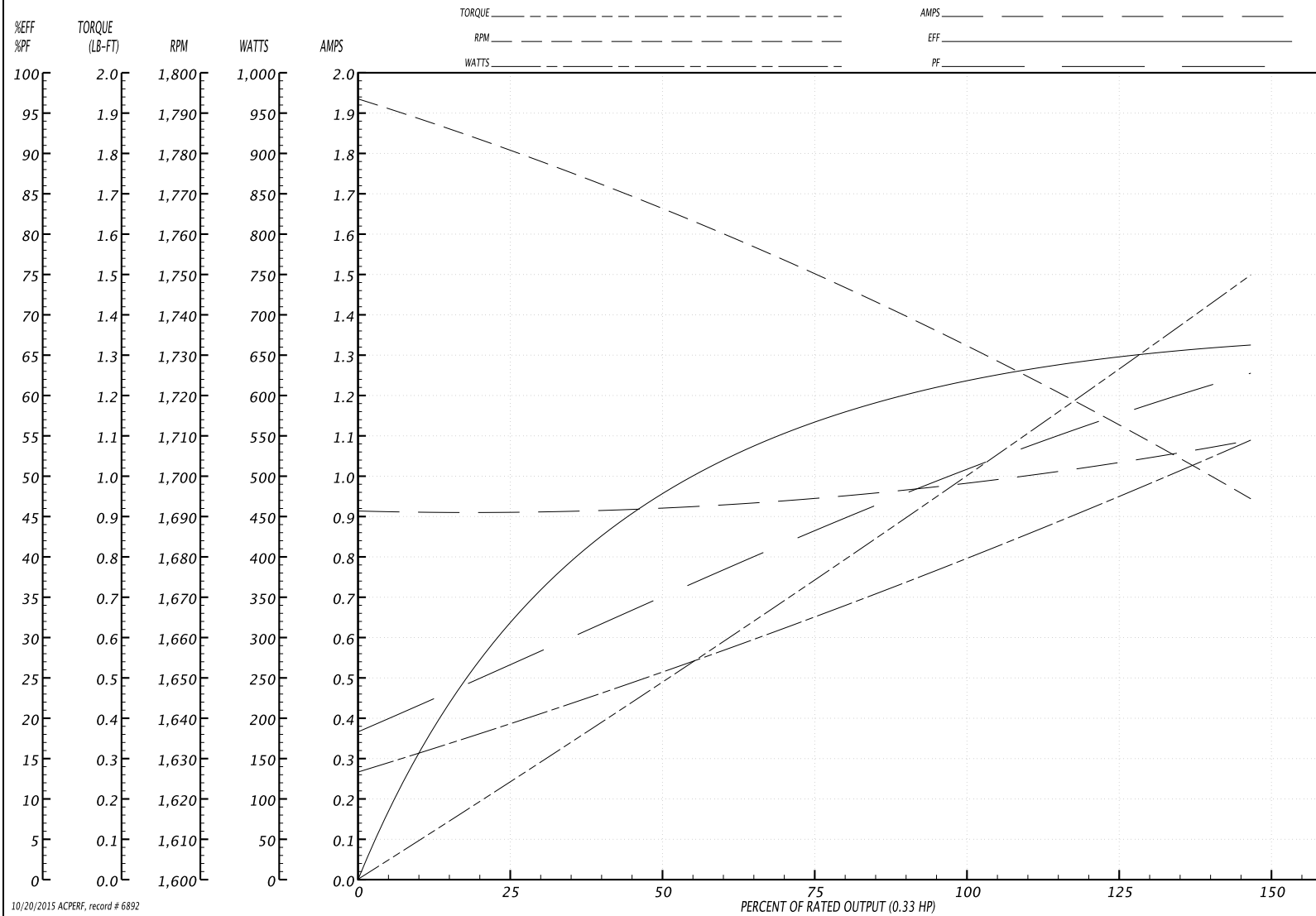
Performance Graph at 460V, 60Hz, 0.33HP Typical performance - Not guaranteed values

**BALDOR ELECTRIC COMPANY**

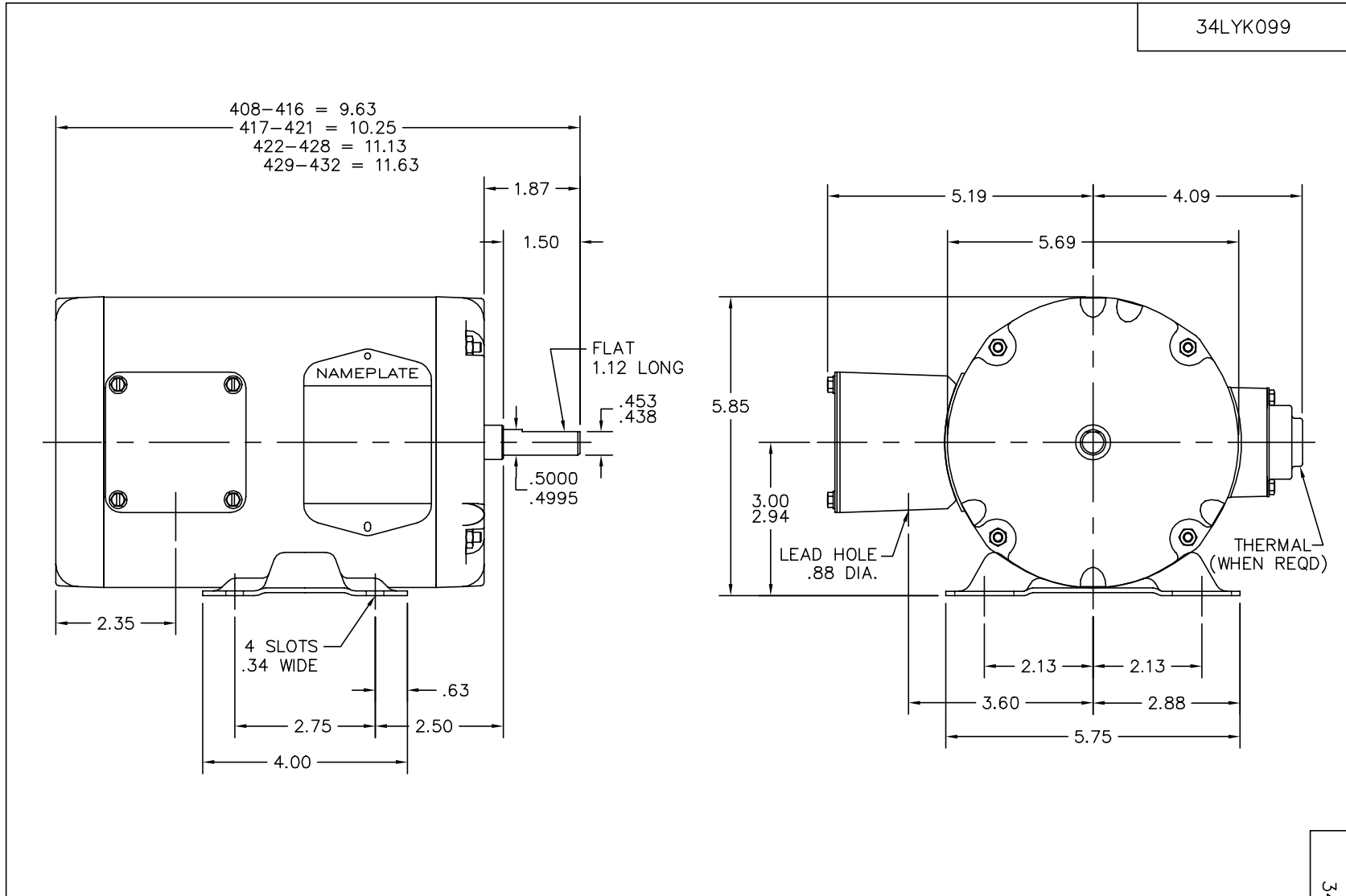
WINDING # 34WGW137

Typical performance - not guaranteed values.

0.33 HP 3 PH 60 HZ 1725 RPM 460 V 3410M  
 TORQUES(LB-FT): PO=4.5 PU=3.2 LR=3.5 LRA=4.5



10/20/2015 ACPERF: record # 6892



CUSTOMER IS RESPONSIBLE FOR DETERMINING THAT MOTOR PERFORMANCE IS SUITABLE IN THE APPLICATION.

|                                  |                      |                              |  |
|----------------------------------|----------------------|------------------------------|--|
| REV. DESC: UPDATE GRAPHIC & ACAD |                      |                              |  |
| REV. LTR: F                      | VERSION: 01          | TDR: 000000358220            |  |
| 660X17C<br>34LYK099              | FILE: \AAA\00026\163 | REVISED: 07:24:22 02/28/2005 |  |
|                                  | MTL: -               | BY: ENROSTO                  |  |

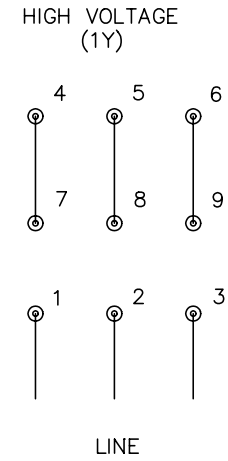
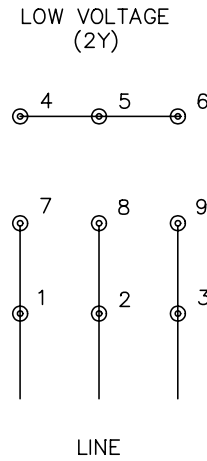
**BALDOR ELECTRIC Co.**

STD HORZ MODEL 34M NEMA 48 TEAO

34LYK099



CD0005



- NOTES:
1. INTERCHANGE ANY TWO LINE LEADS TO REVERSE ROTATION.
  2. OPTIONAL THERMOSTATS ARE PROVIDED WHEN SPECIFIED.
  3. ACTUAL NUMBER OF INTERNAL PARALLEL CIRCUITS MAY BE A MULTIPLE OF THOSE SHOWN ABOVE.
  4. LEAD COLORS ARE OPTIONAL. LEADS MUST ALWAYS BE NUMBERED AS SHOWN.

|   |         |                         |              |
|---|---------|-------------------------|--------------|
| REV. DESC: REVISE TO SHOW OPTIONAL COLORS |         |                         |              |
| REV. LTR: E                               | BY: JLP | REVISED: 01/19/99 10:15 | TDR: 0171435 |
| 90000                                     |         | FILE: AAA00005140       | MDL: -       |
|   |         | MTL: -                  |              |

**BALDOR ELECTRIC Co.**

3PH, DV, 9 LEADS

CD0005